



Price	€2,45 M
Name	Bull
Builder	Canados Oceanic
Origin	Italy
Year/Refit	2016 / -
Overall Length	23.70 m / 77' 07"
Length at Waterline	-
Beam	5.80 m / 19' 00"
Draught max.	1.98 m / 06' 06"
Gross tonnage	76 grt
Displacement	56.00 tonnes
Engines	2 x 1150 hp CAT C18
Speed (Max / Cruise)	26 knots / 23 knots
Range	360 nm
Fuel Capacity	-
Accommodation	6 guests in 3 staterooms, 2 crew in 1 cabins
Type	Motor Yacht
Class	RINA
Flag	-
Hull Type	Mono Hull
Hull Material	GRP
Superstructure Material	GRP
Hull Configuration	Planning
Number of Decks	2
Naval Architecture	Canados Oceanic
Exterior Design	-
Interior Design	-









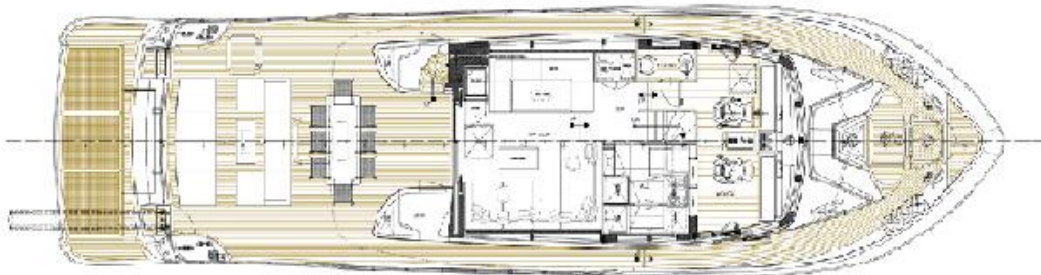
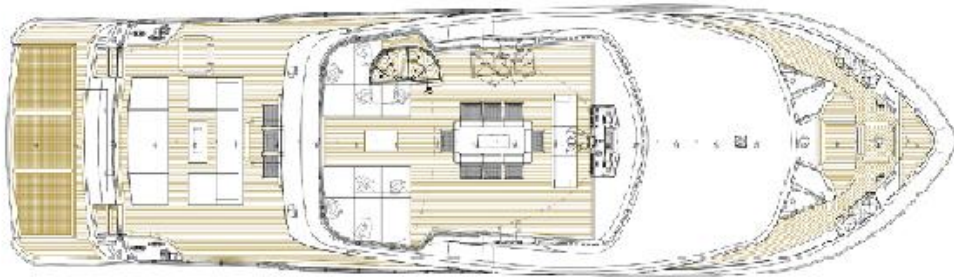








GENERAL ARRANGEMENT





SUMMARY

The Oceanic 76' GT Fast Expedition is the first model in the Oceanic Yacht Range. She is the only yacht of her size that offers a 30+ square meter/323 sq. feet aft deck with sun pad, U shaped saloon for 10 people and open-air dining room for 8 people.

The wheelhouse is located on the main deck, while the saloon and the dining room share an open plan configuration. The galley is located amidships, buffering the social areas from the wheelhouse where the crew can run the yacht without interfering with the owner and guests' privacy.

Benefitting from a carefully studied stepped hull, with her V Drive shaft configuration and twin Caterpillar C18 Acert, the Oceanic 76' GT Fast Expedition is capable of the enviable performance of 23-knots at cruising speed and a 26-knots top speed.

The lower deck is available either in a 4-staterooms version with a full beam owner's stateroom, a VIP and two twins or in a 3-staterooms version with an oversized owner's suite that includes a private saloon. The foredeck is equipped with a dinette where you will enjoy relaxing when the yacht is underway, protected by massive bulwarks. On the fly bridge, which layout can be also customized to clients' request, we offer as standard layout with a second control station, a dining table for 8 shaded by the wing shaped hard top, lounge and sun pads.

Technically, the Oceanic 76' GT Fast Expedition is not only a true marvel in terms of handling she is also a concentrate of modern technologies with its entire superstructure made of Kevlar/Aramat. This material mainly used in the aeronautical industry, allows building a stronger and much lighter superstructure. It results in a lower center of gravity that increases the yacht stability. The planning hull concept, unique to Oceanic Yachts, reduces the buoyancy of the aft section of the hull when running at displacement speeds. As a result, during long range cruises at low speed, the yacht remains extremely comfortable as it eliminates the natural weakness of most fast yachts; pitching. At planning speed, from 16 knots, the Oceanic 76' starts benefiting from the step that ventilate the hull and the propellers allowing for high speeds thanks to reduced wet surface and water friction.

KEY FEATURES

- Extensive outdoor decks
- Oversized social areas
- Superstructure was made of Kevlar / Aramat for more strength and less weight
- BULL is hull#01 of her series, the prototype of its model and catalogue yacht
- 600 kg lifting capable hydraulic swimming platform

All speeds, measurements, capacities, consumptions, etc., may be approximate or estimated. Specifications provided for information only. Data was obtained from sources believed to be reliable and is not guaranteed by Owner or Brokers. Buyer assumes the responsibility to ascertain the correctness of all data contained herein and otherwise provided and must instruct his agent and surveyors to confirm all details for accuracy prior to purchase. Subject to prior sale, price and inventory change, or withdrawal from market without notice.