



Price	SOLD
Name	Zig Zag Ocean (ex. Flying Dragon)
Builder	Admiral
Origin	Italy
Year/Refit	2014 / -
Overall Length	44.80 m / 147' 00"
Length at Waterline	-
Beam	8.60 m / 28' 03"
Draught max.	1.90 m / 06' 03"
Gross tonnage	439 GT
Displacement	270.00 tonnes
Engines	3 x 2160 hp MTU 16V 2000 M93
Speed (Max / Crusie)	20 knots / 16 knots
Range	710 nm @ 15 knots
Fuel Capacity	41480 lts
Accomodation	10 guests in 5 staterooms, 7 crew in 4 cabins
Type	Motor Yacht
Class	-
Flag	-
Hull Type	Mono Hull
Hull Material	Aluminum
Superstructure Material	Aluminum
Hull Configuration	Displacement
Number of Decks	3
Naval Architecture	Admiral Yachts
Exterior Design	LUCA DINI Design & Architecture
Interior Design	Dobroserdov Design

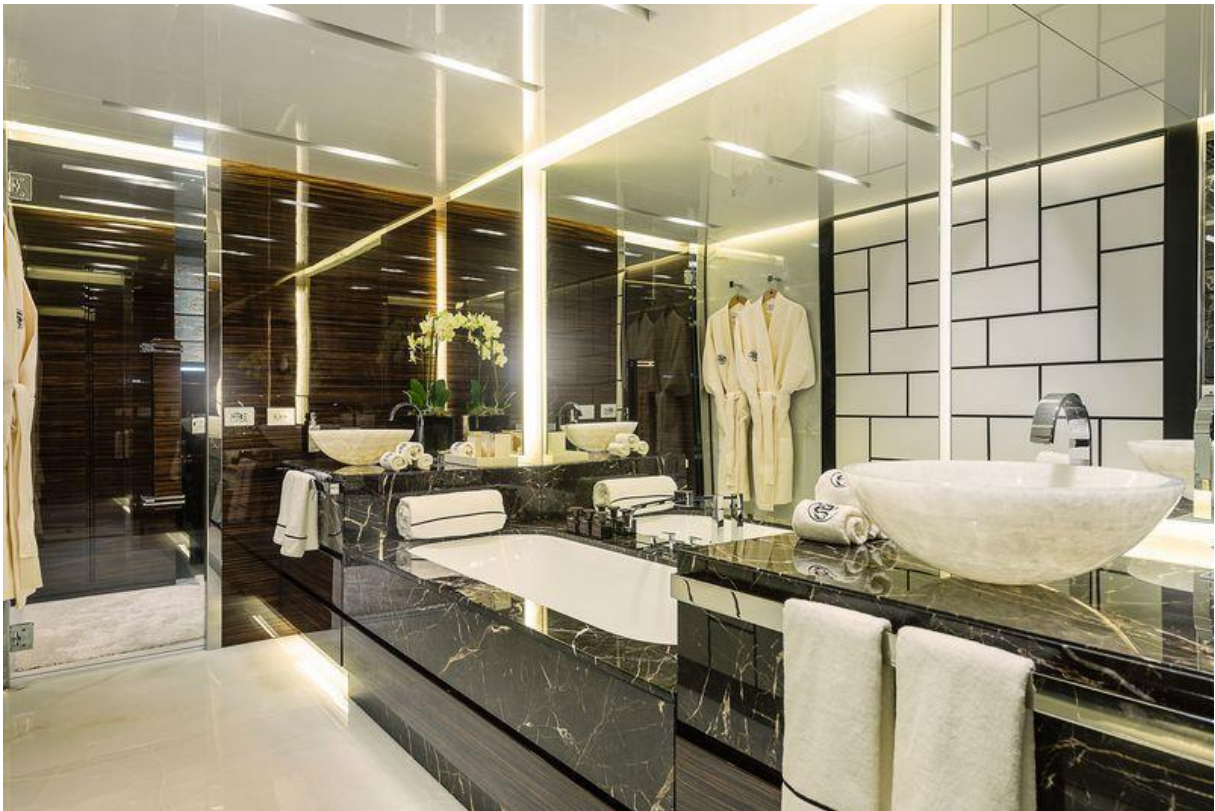






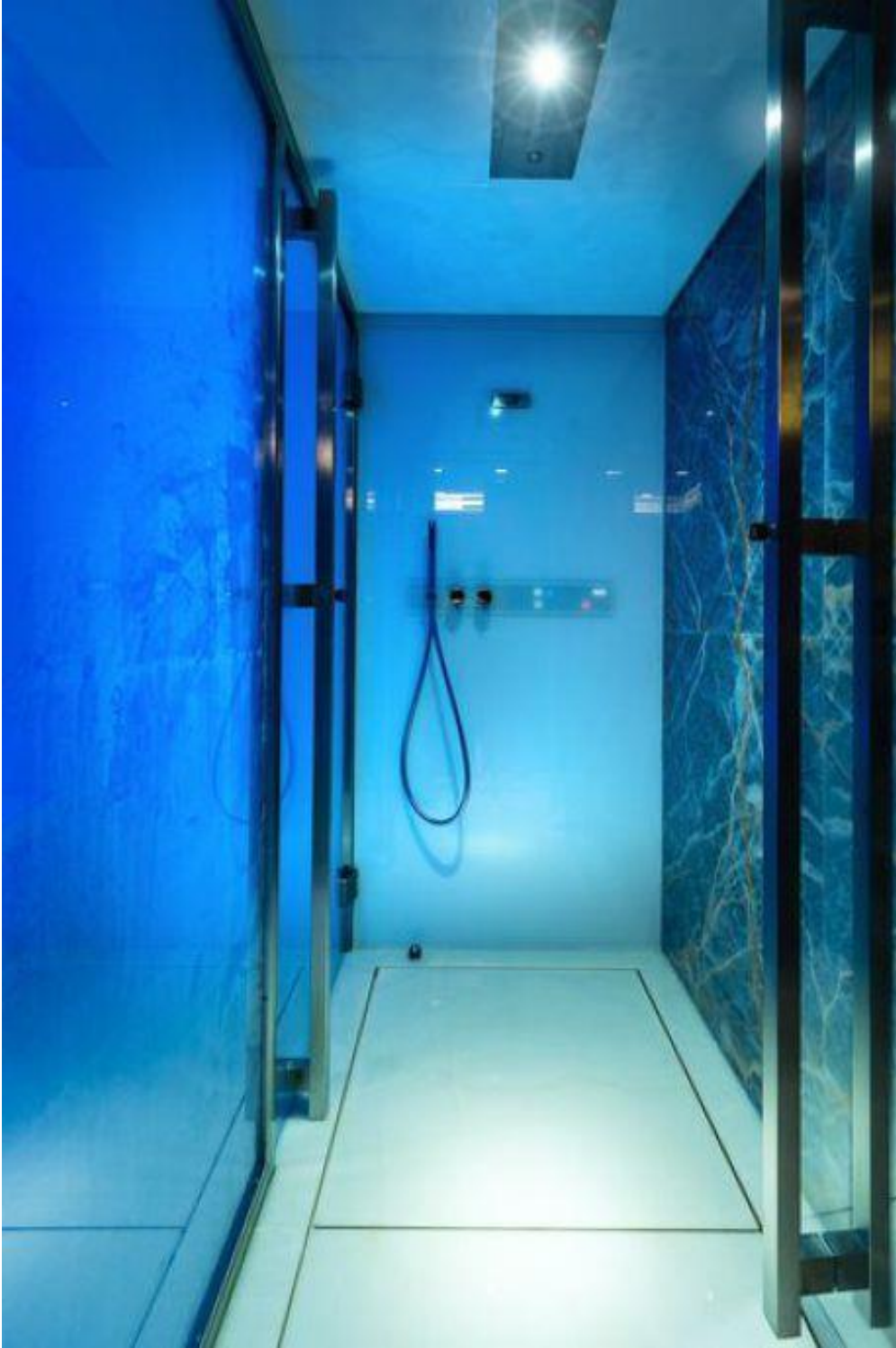
























GENERAL ARRANGEMENT



**SUMMARY**

ZIG ZAG OCEAN (ex. Flying Dragon) belongs to the Regale series from Admiral. ZIG ZAG OCEAN 45 m features a fast planning hull entirely built in aluminum and able to reach a top speed of about 20 knots. She is a raised pilot house design yacht, with an elegant light blue hull enriched by a blue dragon graphic on both sides, which has been designed by Dobroserdov Design. Her exterior was design by Luca Dini.

The main deck features huge and comfortable spaces with full headroom opening sliding doors on the starboard side of the main salon. The main salon is a mixture of dark wood furniture and joinery, combined with precious upholstery and beige colored lackered ceilings. The floor is made of Tabu lati chocolate parquet. A little bit forward the dining area finds place, with a large table for up to 12 people placed on centerline; behind this, a large decorative wooden panel of 4 m x 2 m enriches the area. Forward on the main deck is all about master cabin, taking the full beam of the yacht and featuring large side windows which give natural light to the whole environment. An opening 2 m x 2 m balcony is also available on the right side, delivering a nice corner for delightful breaks. On the floor a precious light color carpet is boarded by black St Laurent marble. A 4 m x 2 m mirror hides a 55" TV. The Owner bathroom has black marble washbasins, white onyx tub and shower which also features a light blue onyx wall. Forward of the owner cabin the steam bath is set between his and her dressing rooms, featuring white onyx floor and glass walls. Both the main deck cockpit and the sun deck feature a big bar corner with white onyx backlit top and front.

The sun deck is actually a terrace overlooking the sea with a large sunbathing area, Jacuzzi and a large table for up to 12 guests made of teak. The hard-top covering part of the sundeck features a teak ceiling with the graphic of a TAO. Every external area can be covered with Arab tents tied on removable poles.

The 4 guest cabins are located on the lower deck and include two twin bed cabins and two double VIP, all with ensuite bathrooms. All cabins feature dark wood furniture, in contrast with the light color carpets, which are further enhanced by red onyx borders and leather headboards. The crew area is located forward on the lower deck, featuring three double cabins and a large captain cabin. The main galley is also located on the lower deck and the crew can also benefit by a huge crew mess and by a separate laundry area.

KEY FEATURES

- Full width master suite with private balcony, gym and steam room
- His and hers walk-in wardrobes 2 VIP and 2 twin convertible cabins
- Floor to ceiling sliding doors in dining area
- Aft deck reception area with bar
- Large sundeck (approx. 93 sqm) with Jacuzzi
- Zero speed stabilisers

All speeds, measurements, capacities, consumptions, etc., may be approximate or estimated. Specifications provided for information only. Data was obtained from sources believed to be reliable and is not guaranteed by Owner or Brokers. Buyer assumes the responsibility to ascertain the correctness of all data contained herein and otherwise provided and must instruct his agent and surveyors to confirm all details for accuracy prior to purchase. Subject to prior sale, price and inventory change, or withdrawal from market without notice.