



| | |
|--------------------------------|---|
| Price | €14,90 M |
| Name | Lady Mrd (ex. Lady M) |
| Builder | Benetti |
| Origin | Italy |
| Year/Refit | 2015 / - |
| Overall Length | 41.93 m / 137' 07" |
| Length at Waterline | - |
| Beam | 9.05 m / 29' 08" |
| Draught max. | 2.19 m / 07' 02" |
| Gross tonnage | 460 GT |
| Displacement | 355.00 tonnes |
| Engines | 2 x 1450 hp CAT C32 |
| Speed (Max / Cruise) | 15 knots / 14 knots |
| Range | 4000 nm |
| Fuel Capacity | - |
| Accommodation | 12 guests in 5 staterooms, 7 crew in 4 cabins |
| Type | Motor Yacht |
| Class | ABS |
| Flag | Maltese |
| Hull Type | Mono Hull |
| Hull Material | GRP |
| Superstructure Material | GRP |
| Hull Configuration | Displacement |
| Number of Decks | 3 |
| Naval Architecture | Benetti |
| Exterior Design | Stefano Righini |
| Interior Design | Francois Zuretti |























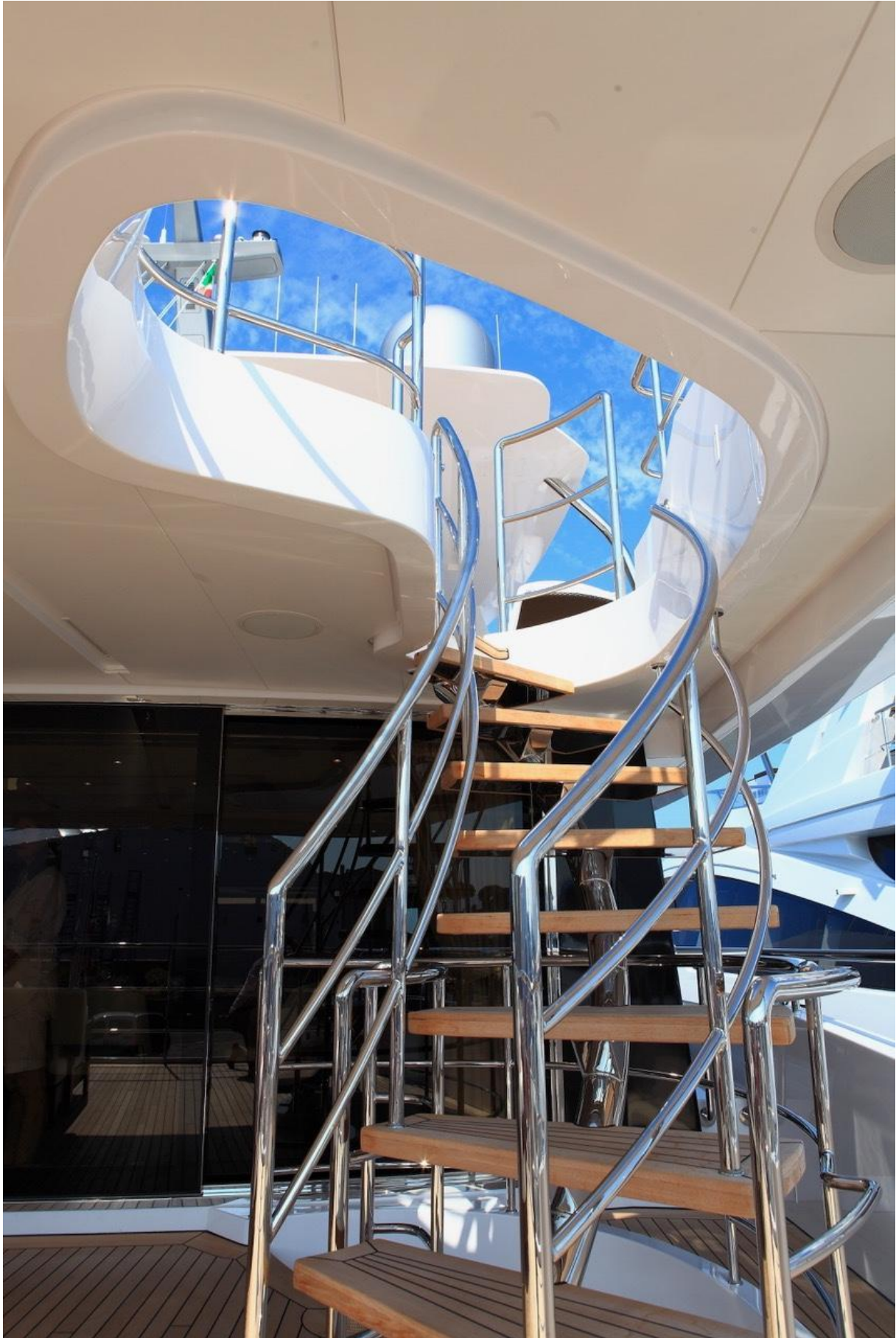












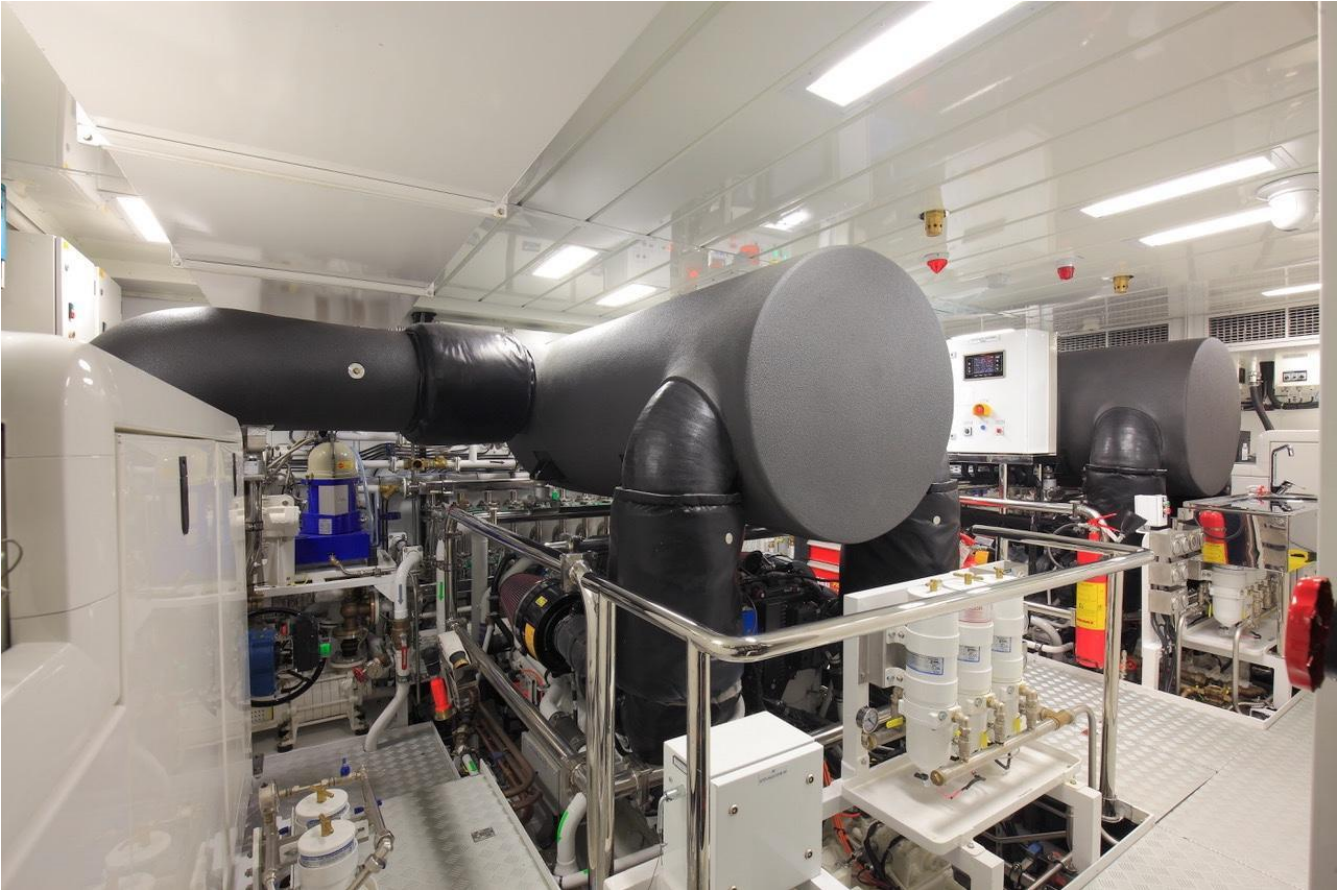














GENERAL ARRANGEMENT



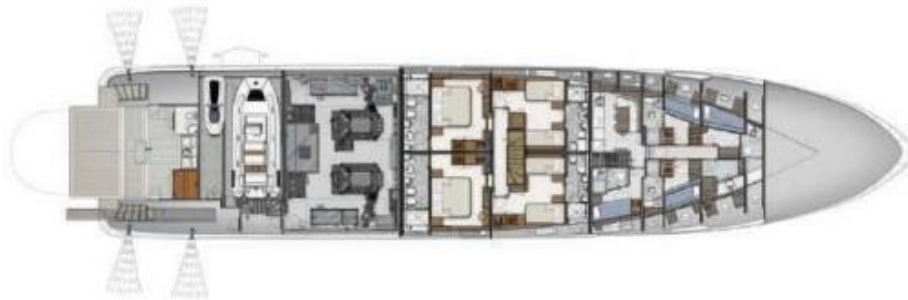
SUN DECK



UPPER DECK



MAIN DECK



LOWER DECK



SUMMARY

LADY MRD is a superyacht with a length of 41.93 m. Her builder is Benetti from Italy delivered the LADY MRD in 2015. The LADY MRD, previously named LADY M, features exterior design by Stefano Righini Design, while her interior was penned by Zuretti Interior Design.

Superyacht LADY MRD has got 5 staterooms for 12 guests are accommodation by on board, and she also has 4 cabins for accommodation of 7 crew members including the captain of LADY MRD.

Built in composite, Benetti Crystal 140' superyacht LADY MRD is fitted with 2 x 1450 hp CAT C32, giving her a maximum speed of 15 knots and a cruising speed of 14 knots. ABS classed and MCA compliant, the vessel features a beam of 9.05 m and a maximum draft of 2.19 m.

The yacht is equipped with an ultra-modern stabilization system which reduces roll motion effect and results in a smoother and more enjoyable cruising experience underway.

She has got a garage with side door amidships that frees up space for a large beach area astern.

KEY FEATURES

- Fully equipped with Naiad zero speed stabilizers
- Hard top at aft
- MCA Compliance LY2
- Perfect condition
- Top hinged side- tender garage door
- Full bar and jacuzzi at sundeck
- Swimming pool at upper deck
- Multifunctional hydraulically powered large platform on aft beach club

All speeds, measurements, capacities, consumptions, etc., may be approximate or estimated. Specifications provided for information only. Data was obtained from sources believed to be reliable and is not guaranteed by Owner or Brokers. Buyer assumes the responsibility to ascertain the correctness of all data contained herein and otherwise provided and must instruct his agent and surveyors to confirm all details for accuracy prior to purchase. Subject to prior sale, price and inventory change, or withdrawal from market without notice.