

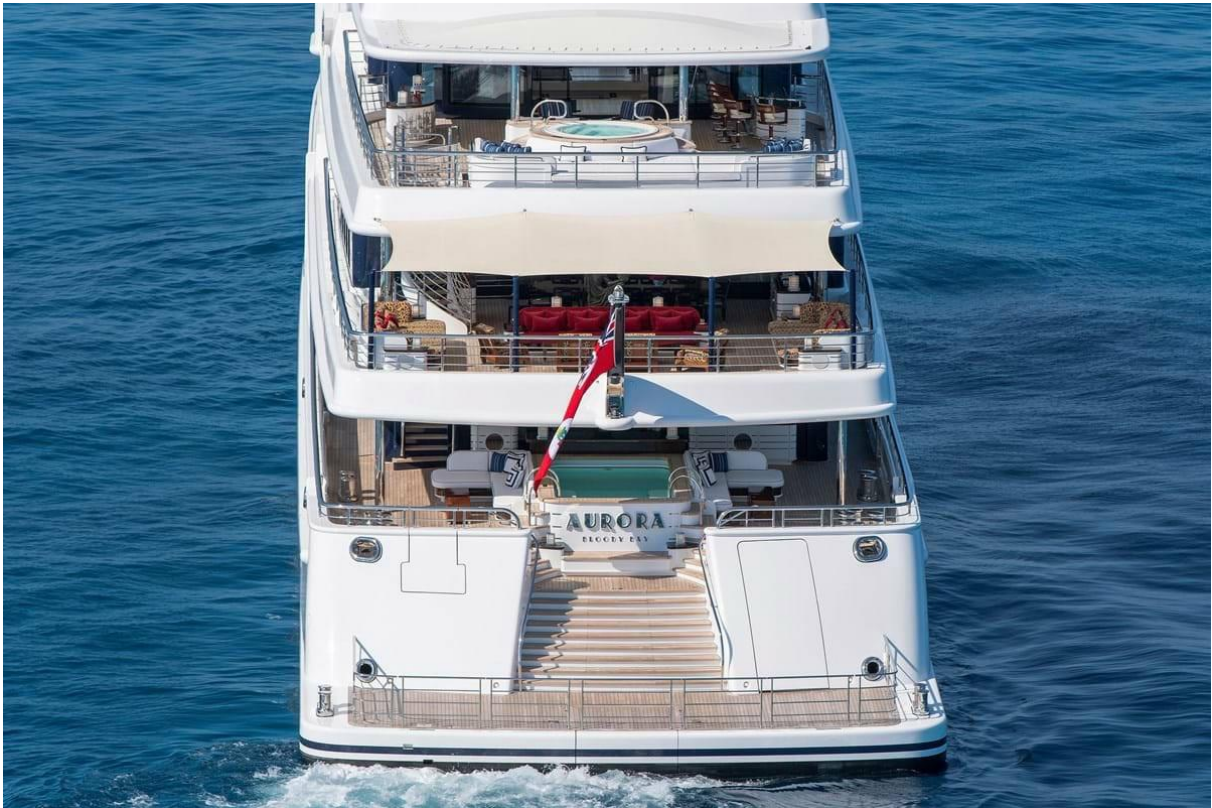


Price	€130,00 M
Name	Aurora
Builder	Lürssen Yachts
Origin	Germany
Year/Refit	2017
Overall Length	74.00 m / 242' 08"
Length at Waterline	-
Beam	13.00 m / 42' 06"
Draught (Max.)	3.70 m / 12' 01"
Gross Tonnage	2113 grt
Displacement	-
Engines	2 x 2682 hp MTU
Speed (Max / Cruise)	17.8 knots / 14 knots
Range	-
Fuel Capacity	-
Accommodation	14 guests in 7 staterooms, 21 crew in cabins
Type	Motor Yacht
Class	Lloyd's Register
Flag	Cayman Islands
Hull Type	Mono hull
Hull Material	Steel
Superstructure Material	Aluminium
Hull Configuration	Displacement
Number of Decks	4
Naval Architecture	Lürssen Yachts
Exterior Design	Winch Design
Interior Design	Winch Design









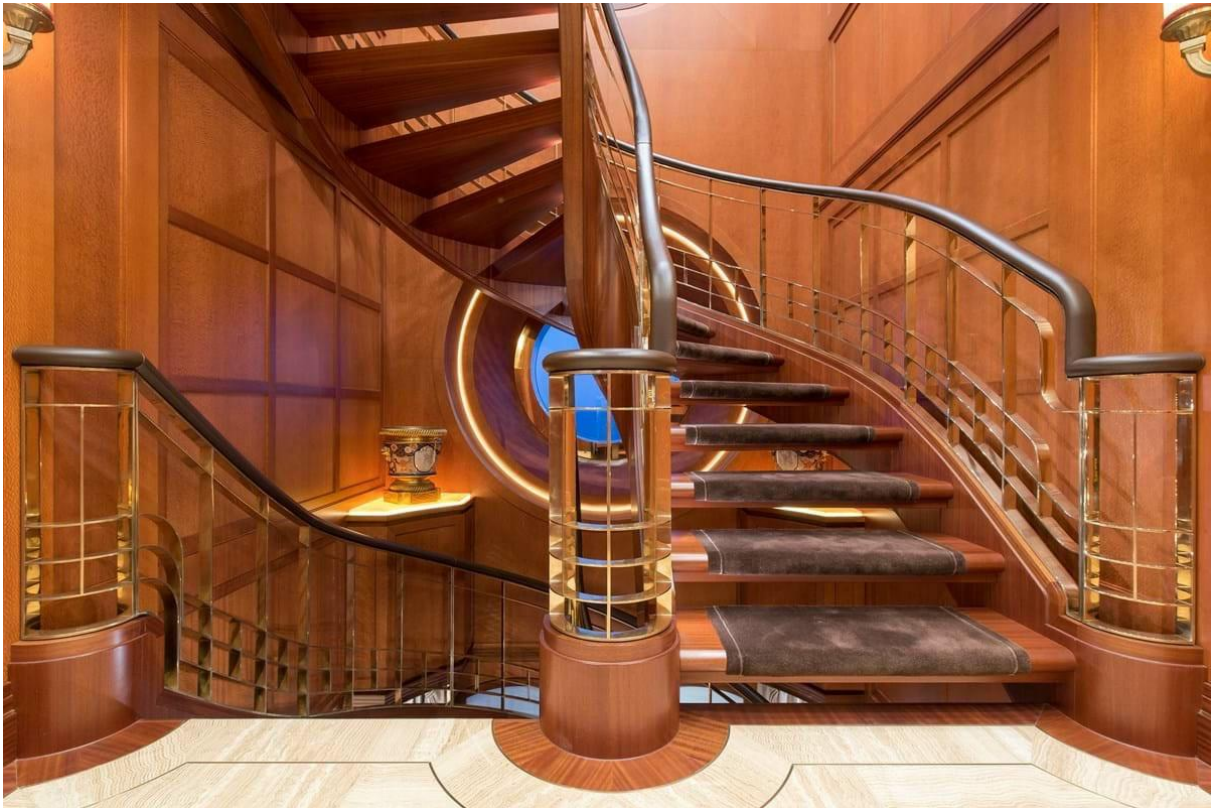








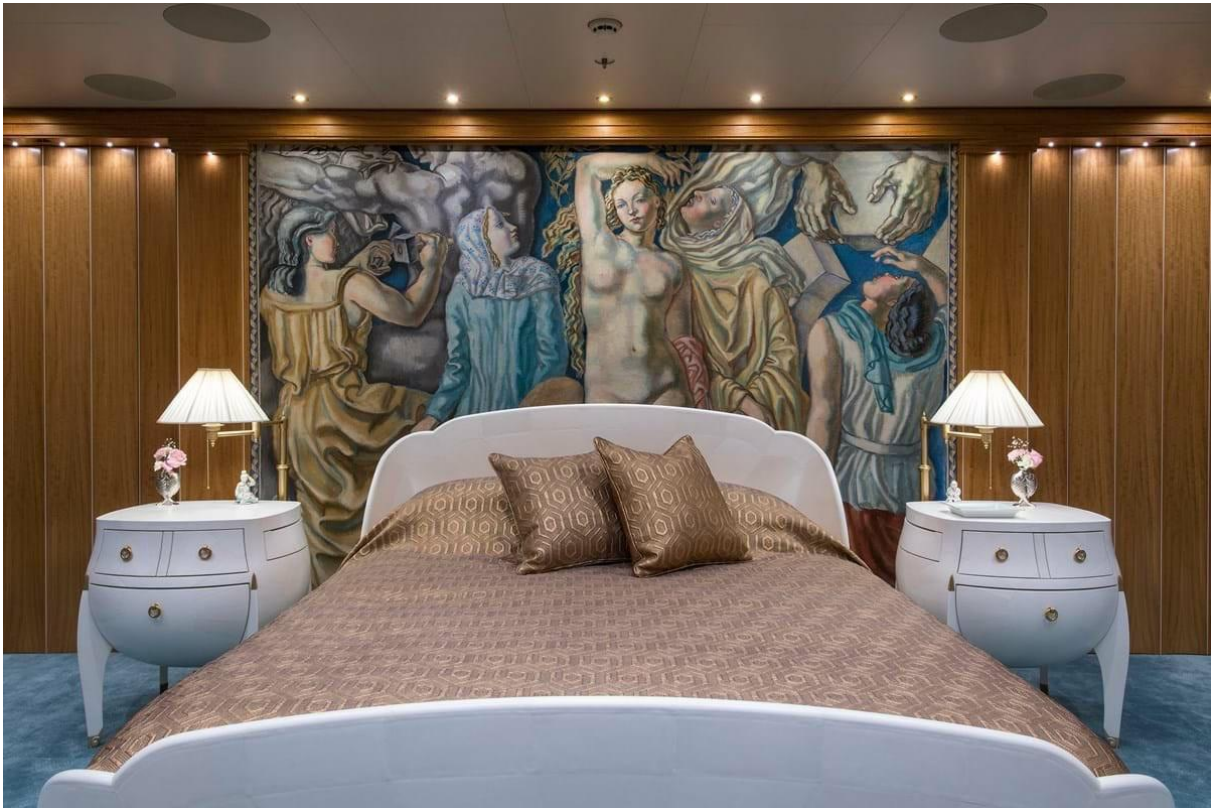












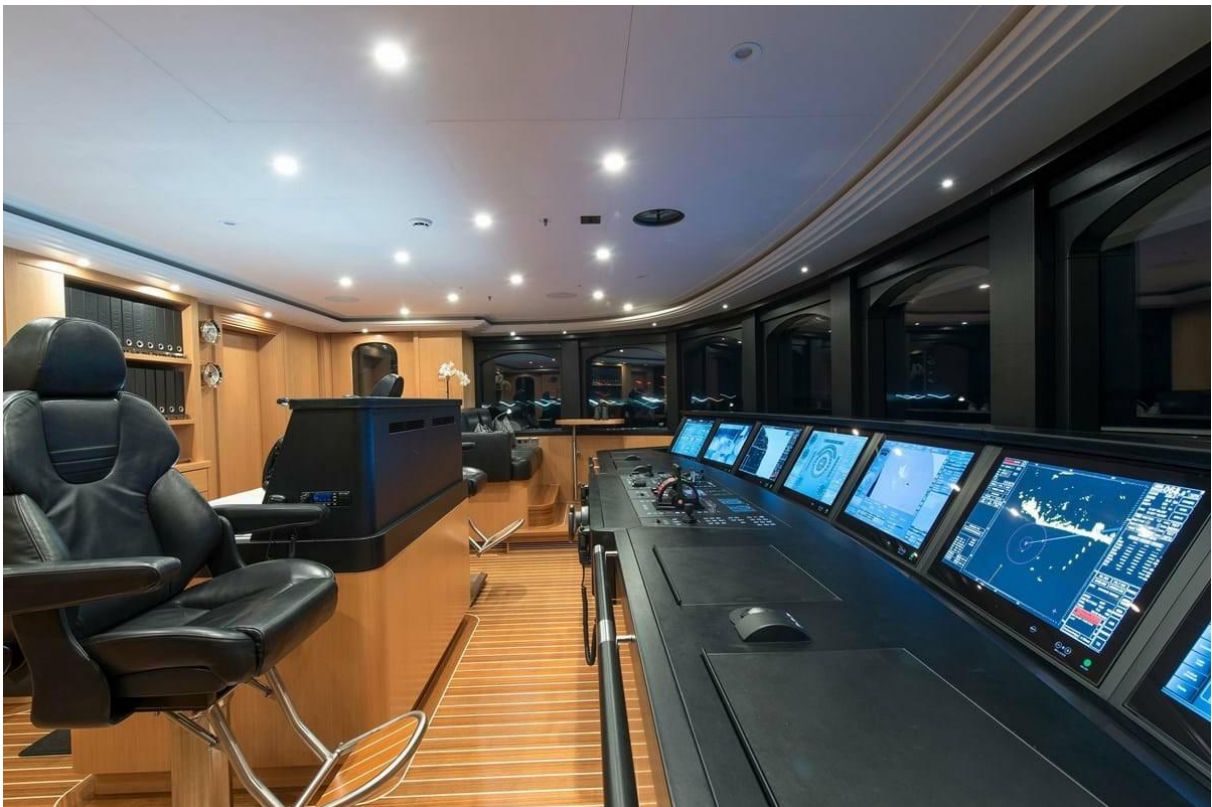


















GENERAL ARRANGEMENT

SUN DECK



■ GUEST AREAS ■ MASTER SUITE ■ GUEST CABINS ■ MASTER SUITE OFFICE ■ GYM ■ MASSAGE SUITE ■ HAMMAM ■ JACUZZI ■ POOL

BRIDGE DECK



■ GUEST AREAS ■ MASTER SUITE ■ GUEST CABINS ■ MASTER SUITE OFFICE ■ GYM ■ MASSAGE SUITE ■ HAMMAM ■ JACUZZI ■ POOL

OWNER'S DECK



■ GUEST AREAS ■ MASTER SUITE ■ GUEST CABINS ■ MASTER SUITE OFFICE ■ GYM ■ MASSAGE SUITE ■ HAMMAM ■ JACUZZI ■ POOL



MAIN DECK



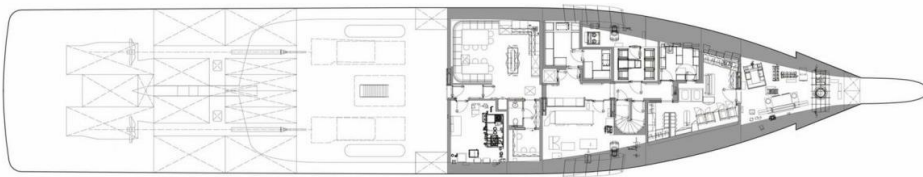
■ GUEST AREAS ■ MASTER SUITE ■ GUEST CABINS ■ MASTER SUITE OFFICE ■ GYM ■ MASSAGE SUITE ■ HAMMAM ■ JACUZZI ■ POOL

LOWER DECK



■ GUEST AREAS ■ MASTER SUITE ■ GUEST CABINS ■ MASTER SUITE OFFICE ■ GYM ■ MASSAGE SUITE ■ HAMMAM ■ JACUZZI ■ POOL

TANK DECK



■ GUEST AREAS ■ MASTER SUITE ■ GUEST CABINS ■ MASTER SUITE OFFICE ■ GYM ■ MASSAGE SUITE ■ HAMMAM ■ JACUZZI ■ POOL

**SUMMARY**

AURORA is a 74.00 m motor yacht with a steel hull and an aluminium superstructure constructed to Lloyd's classification and delivered by revered German shipyard Lurssen in 2017. She is designed inside and out by multiaward-winning British studio Winch Design with Art Deco-inspired interiors and she has just completed her five-year class survey.

With a beam of 13.20 m she has an interior volume of 2,113GT across four guest decks. An intimate top deck observation lounge has a daybed and lounge with three bar stools forward. A fully equipped aft-facing gym with two large skylights and panoramic views has sliding glass doors that open onto a terrace aft. There is a jacuzzi aft surrounded by sunpads, buffet bar to starboard and J-shaped sit-up bar to port. The upper deck aft is all about relaxation and entertainment. A huge sun lounge aft has optional shade from a removable awning and there is dining for 12 guests with buffet bars either side. Inside there is a sit-up bar styled on 1920s motor racing and a selection of convivial lounges.

Forward is the owner's suite with wraparound views, access to a private lounge foredeck lounge and the entire expanse of teak foredeck. Including the upper deck owner's suite, she welcomes 14 guests and also accommodates up to 21 crew. The focus of the main deck aft is a large central pool with Lshaped sofa seating either side and two buffet bars. A central staircase leads down to a large swim platform that features hydraulic bathing steps for ease of access to the water. Her tenders are stowed in the lower deck aft and launched through shell doors either side by horizontal davits.

KEY FEATURES

- Retro-classic exterior design
- Iconic Art Deco interior by Winch Design
- German build pedigree
- Enormous volume
- Privately operated, never chartered
- Experienced repeat owner
- Rare modern/recently built opportunity
- Heli capable (touch & go)
- 9.40 m Hinkley and 9.70 m X-Tender

All speeds, measurements, capacities, consumptions, etc., may be approximate or estimated. Specifications provided for information only. Data was obtained from sources believed to be reliable and is not guaranteed by Owner or Brokers. Buyer assumes the responsibility to ascertain the correctness of all data contained herein and otherwise provided and must instruct his agent and surveyors to confirm all details for accuracy prior to purchase. Subject to prior sale, price and inventory change, or withdrawal from market without notice.