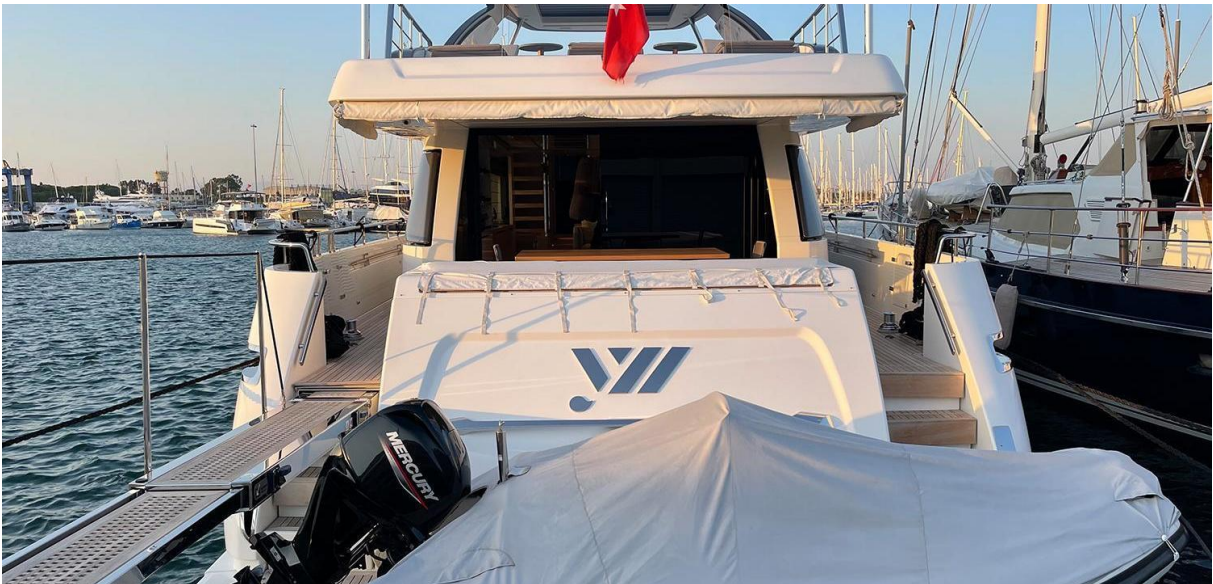




<b>Price</b>	€5,50 M
<b>Name</b>	Y2
<b>Builder</b>	Sanlorenzo
<b>Origin</b>	Italy
<b>Year/Refit</b>	2020
<b>Overall Length</b>	26.75 m / 87' 09"
<b>Length at Waterline</b>	-
<b>Beam</b>	6.35 m / 20' 10"
<b>Draught (Max.)</b>	1.90 m / 06' 03"
<b>Gross Tonnage</b>	90 grt
<b>Displacement</b>	-
<b>Engines</b>	2 x 1947 hp MTU 12V2000M96L
<b>Speed (Max / Cruise)</b>	32 knots / 27 knots
<b>Range</b>	-
<b>Fuel Capacity</b>	8000 lts
<b>Accommodation</b>	11 guests in 6 staterooms
<b>Type</b>	Motor Yacht
<b>Class</b>	-
<b>Flag</b>	Turkish
<b>Hull Type</b>	Mono hull
<b>Hull Material</b>	GRP
<b>Superstructure Material</b>	GRP
<b>Hull Configuration</b>	Planning
<b>Number of Decks</b>	2
<b>Naval Architecture</b>	Sanlorenzo
<b>Exterior Design</b>	Officina Italiana Design
<b>Interior Design</b>	Officina Italiana Design

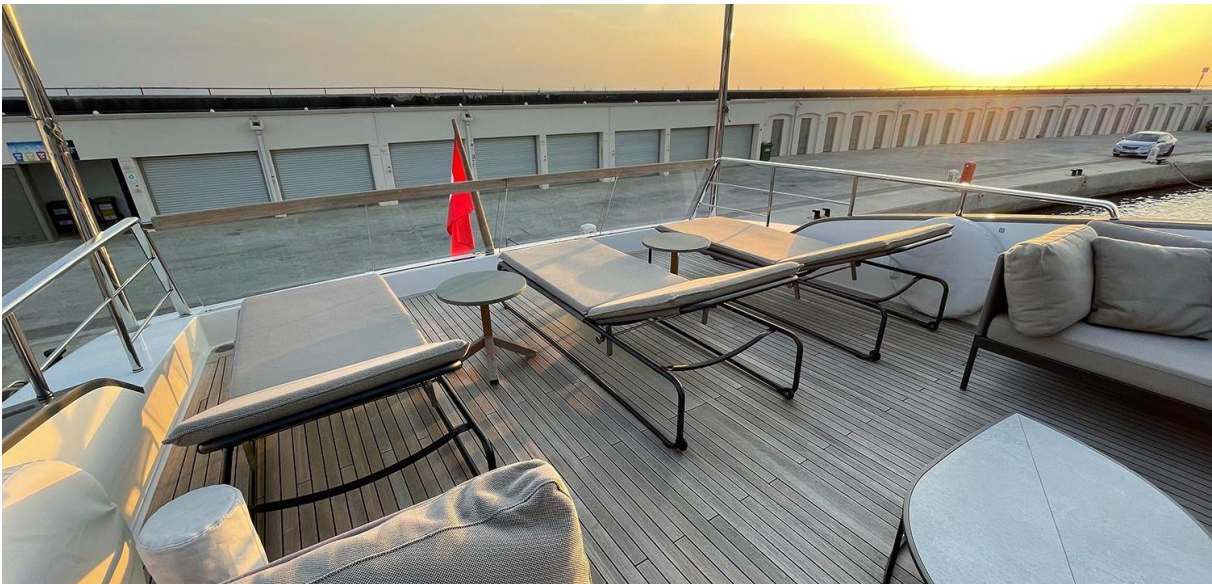




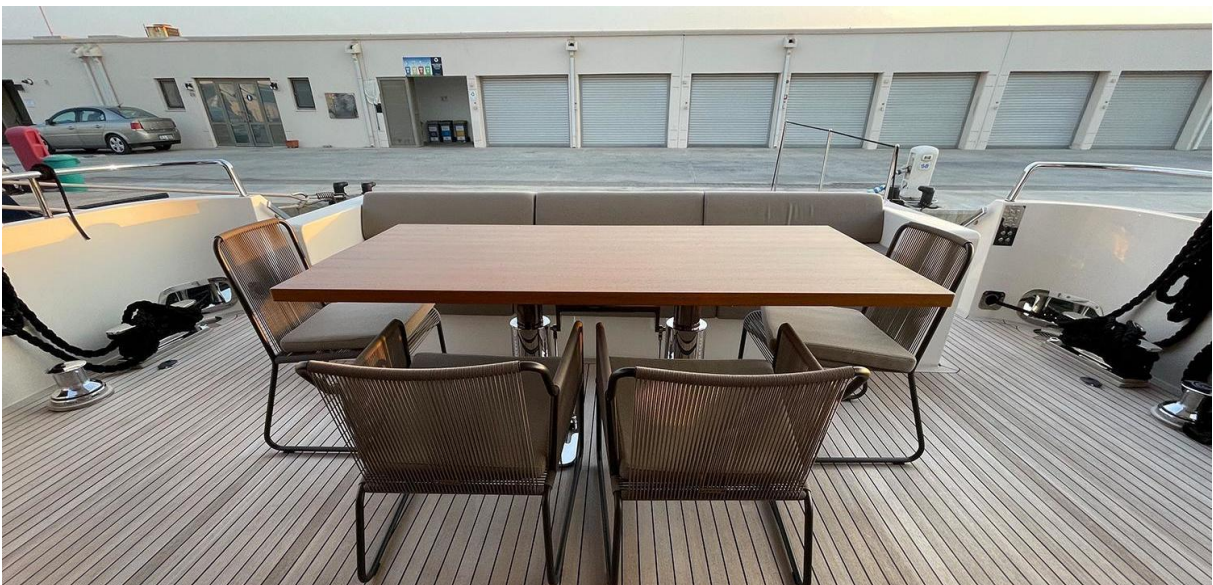
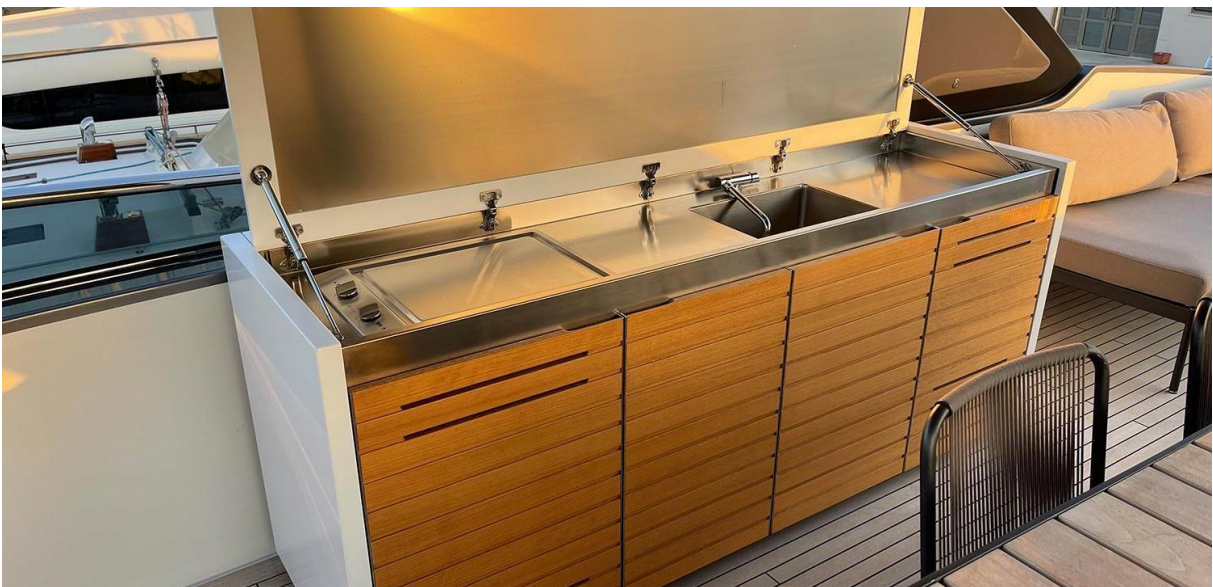
















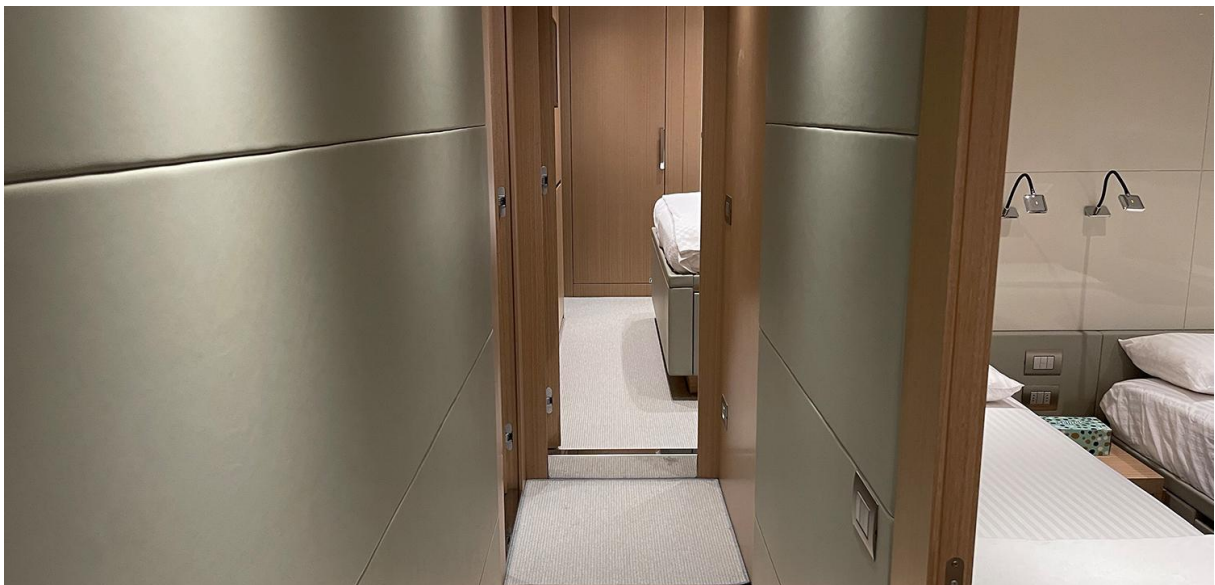




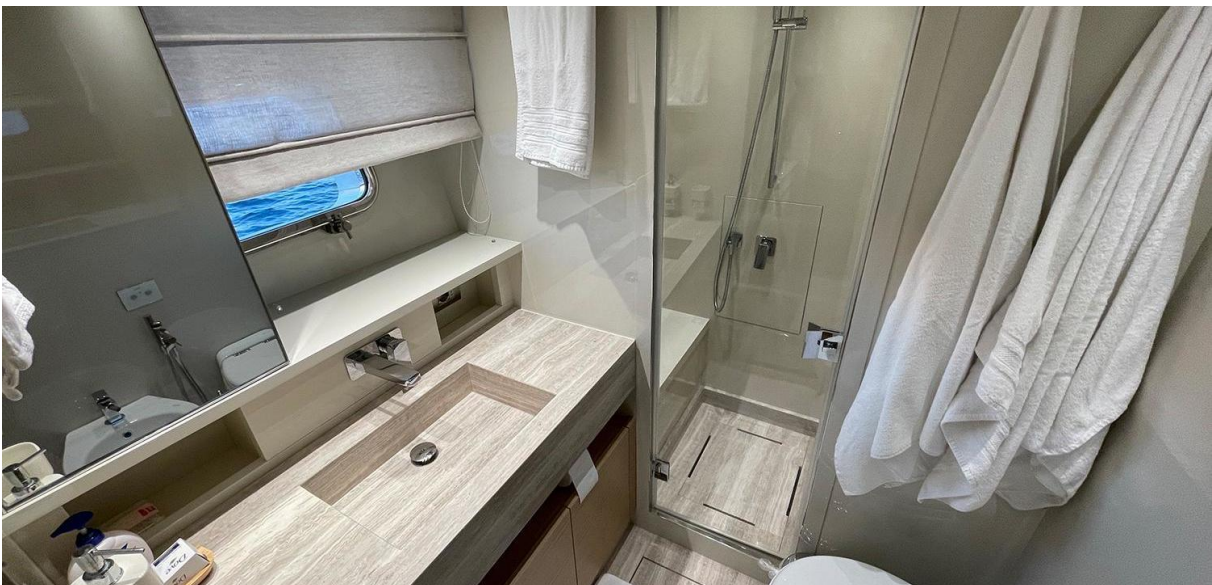




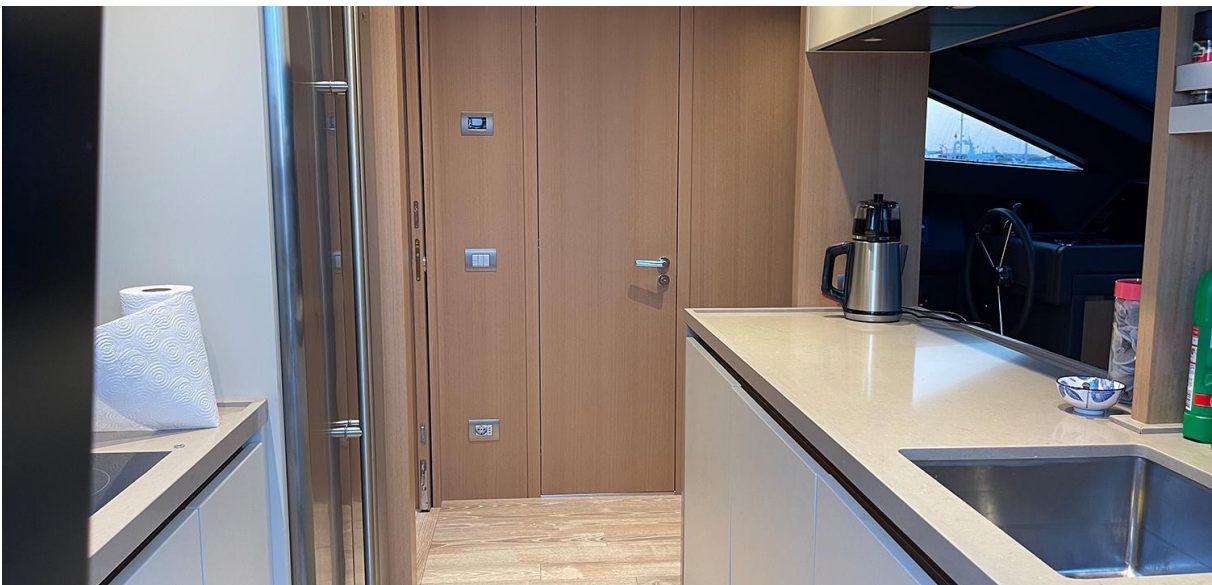








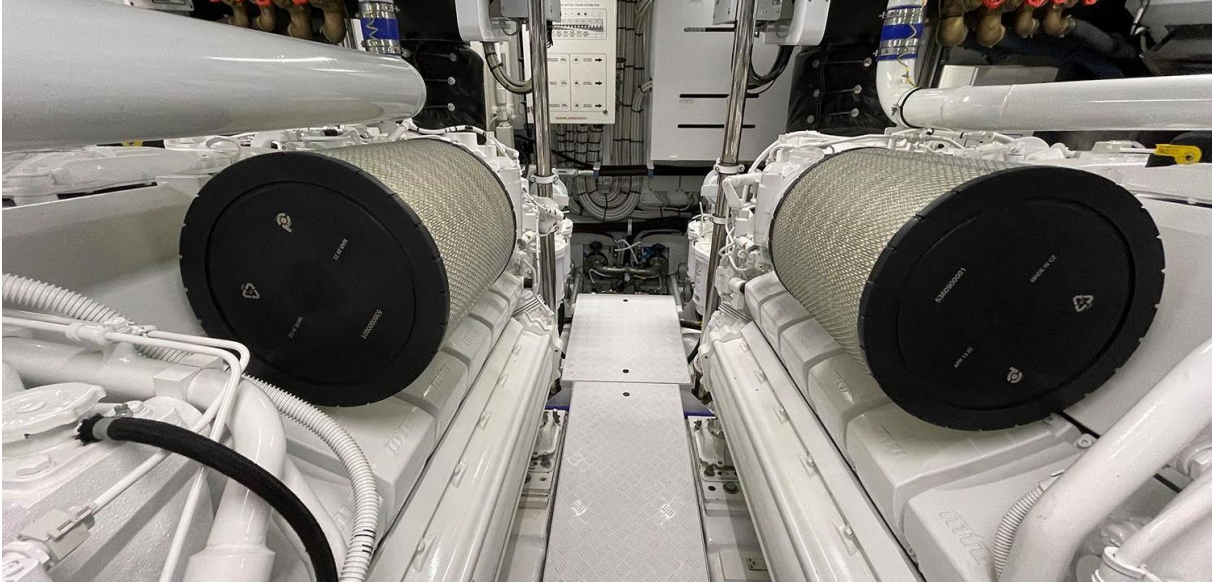








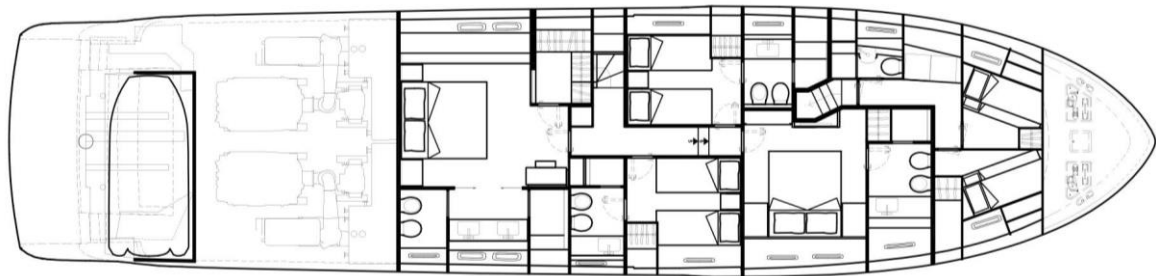
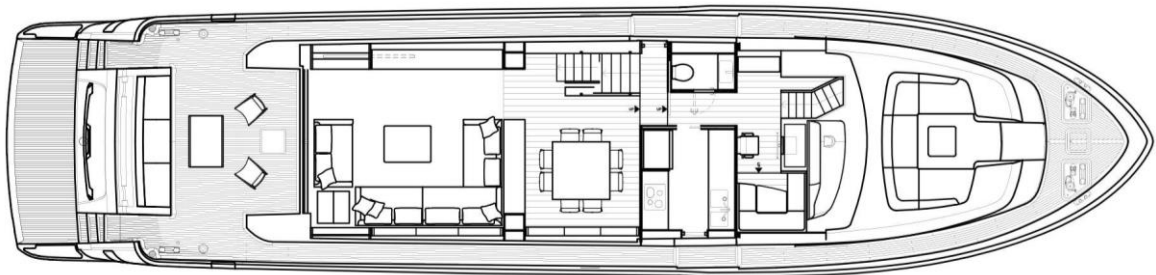
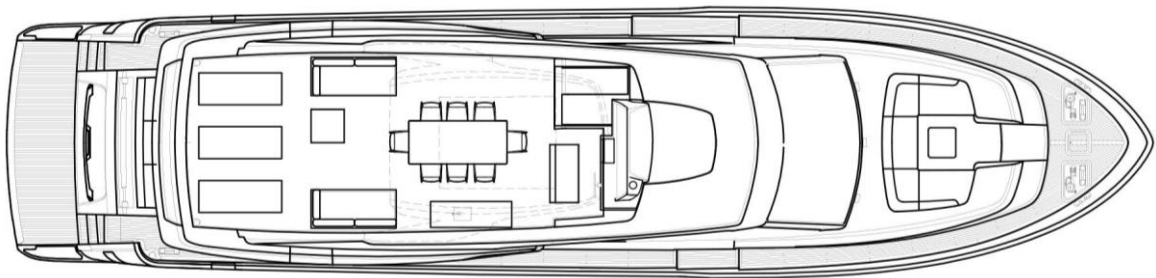








## GENERAL ARRANGEMENT





**SUMMARY**

For years, Sanlorenzo has crafted tailor-made motor yachts respecting the style and needs of their owners. Y2 is a motor yacht with a length of 26.76 m. The yacht's builder is Sanlorenzo from Italy who delivered superyacht Y2 in 2020. The superyacht has a beam of 6.35 m, a draft of 1.90 m and a volume of 90 GT.

The flybridge yacht features exterior design by Officina Italiana Design (Mauro Micheli), while her interior was penned by Officina Italiana Design (Mauro Micheli), with naval architecture by Sanlorenzo. Up to 11 guests are accommodated on board the superyacht Y2 the Sanlorenzo SL86 yacht Y2 has a grp hull and grp superstructure. She is powered by 2 MTU engines, which give her a cruising speed of 27.0 kn and a top speed of 32.0 kn. She carries 8,000 liters of fuel on board, and 1,700 liters of water.

**KEY FEATURES**

- In perfect condition
- Timeless Design
- Silk Georgette marble wall in the owner's shower
- Eucalyptus wood for interiors and staterooms
- External inox shower column
- Hardtop with electric opening roof system
- Zero Speed fins stabilizer
- Hydraulic stern thruster
- 2021 Grand 420 RIB with 60HP Mercury
- Engine hours 294h (January, 2023)

All speeds, measurements, capacities, consumptions, etc., may be approximate or estimated. Specifications provided for information only. Data was obtained from sources believed to be reliable and is not guaranteed by Owner or Brokers. Buyer assumes the responsibility to ascertain the correctness of all data contained herein and otherwise provided and must instruct his agent and surveyors to confirm all details for accuracy prior to purchase. Subject to prior sale, price and inventory change, or withdrawal from market without notice.