



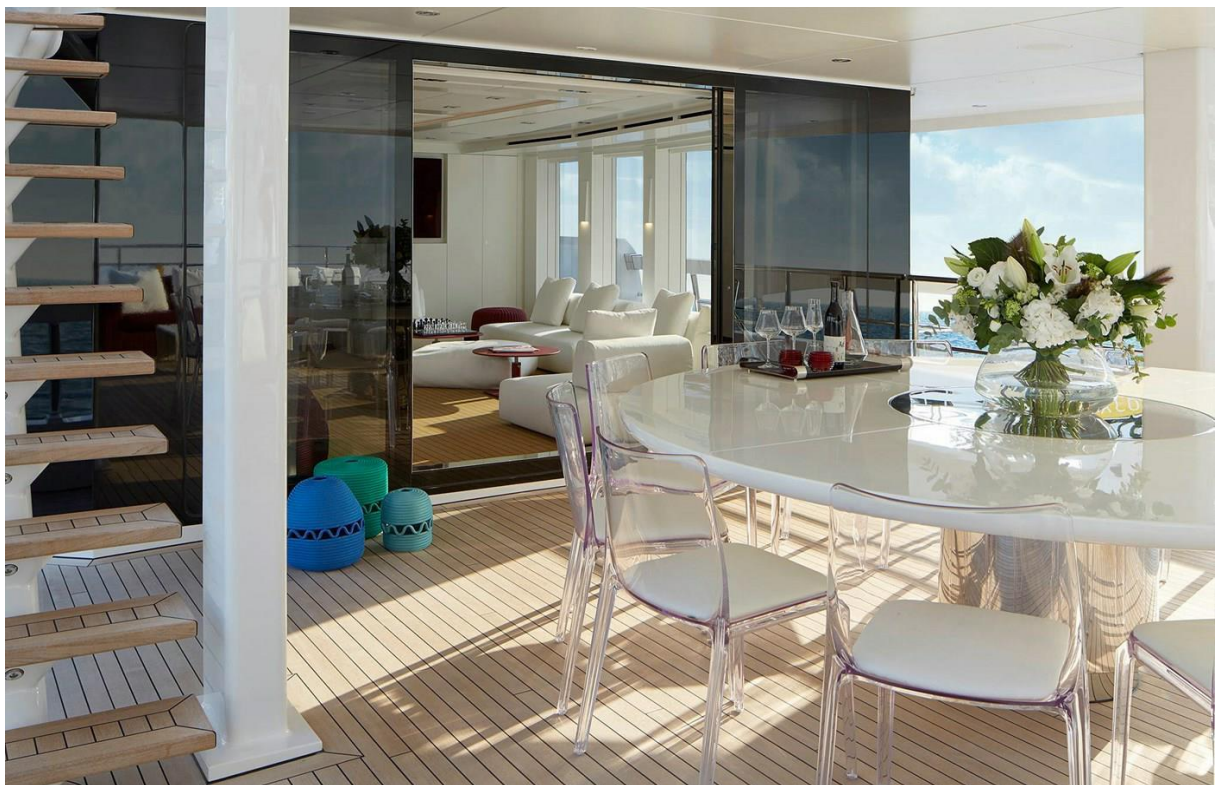
Price	€29,50 M
Name	Home
Builder	Heesen
Origin	Netherlands
Year/Refit	2017
Overall Length	49.80 m / 163' 05"
Length at Waterline	-
Beam	9.00 m / 29' 11"
Draught (Max.)	2.15 m / 07' 01"
Gross Tonnage	499 grt
Displacement	-
Engines	2 x 805 hp MTU 12V2000M61
Speed (Max / Cruise)	16.5 knots / 13 knots
Range	3000 nm
Fuel Capacity	45000 lts
Accommodation	12 guests in 6 staterooms, 10 crew in cabins
Type	Motor Yacht
Class	ABS
Flag	Marshall Islands
Hull Type	Mono hull
Hull Material	Aluminium
Superstructure Material	Aluminium
Hull Configuration	Displacement
Number of Decks	3
Naval Architecture	Van Oosanen
Exterior Design	Omega Architects
Interior Design	Cristiano Gatto Design



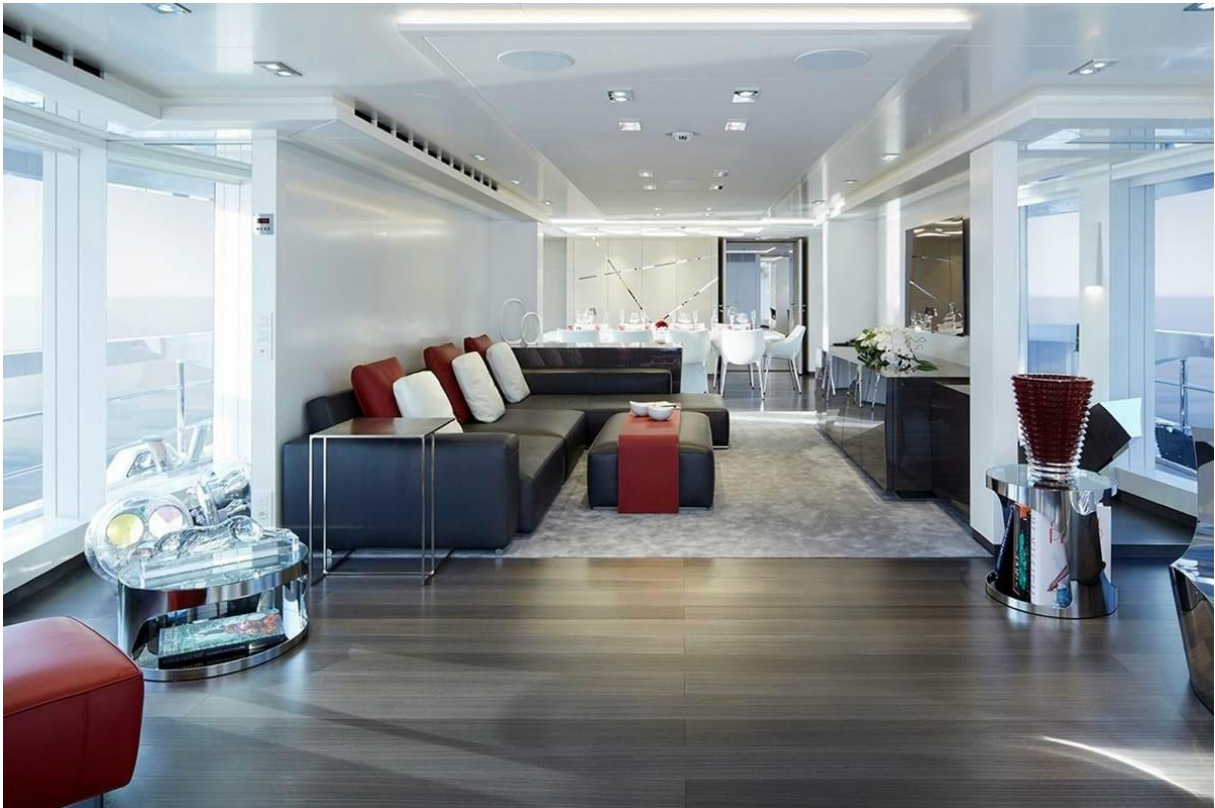






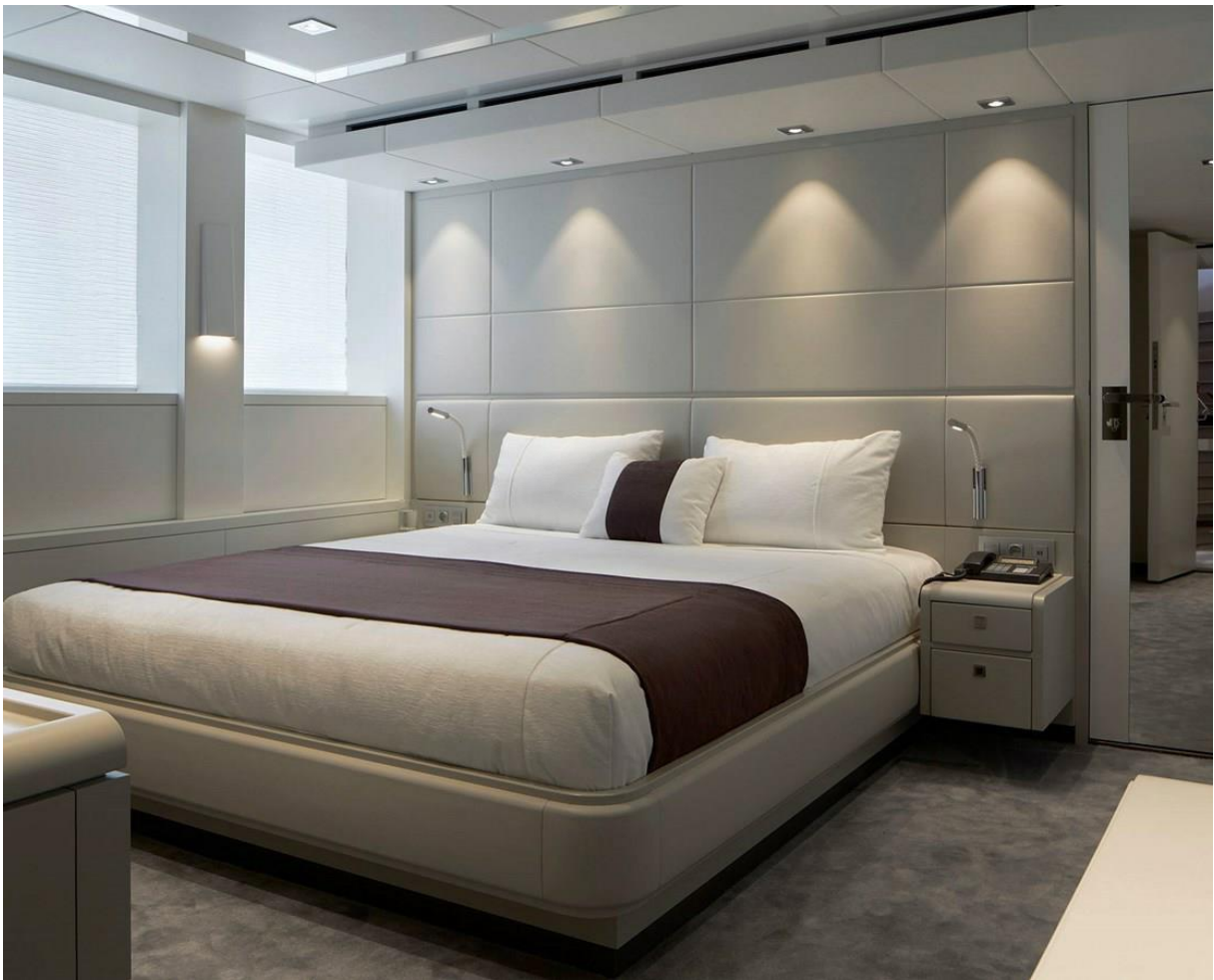












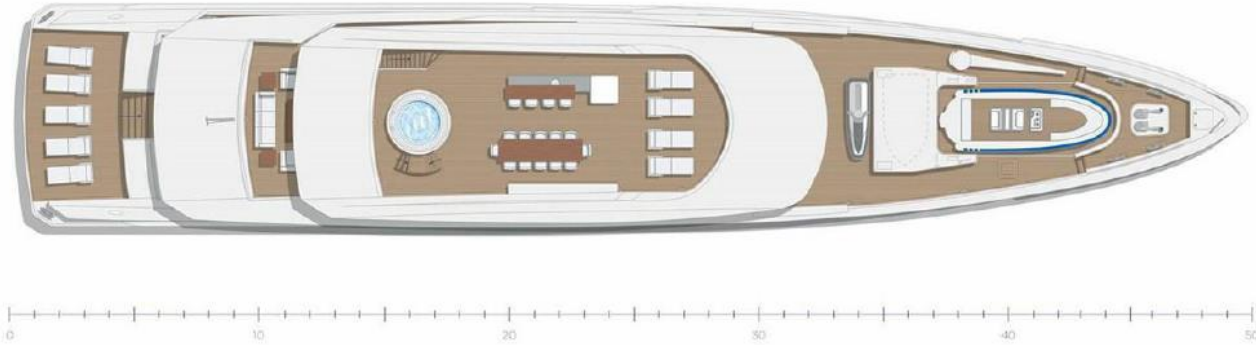






GENERAL ARRANGEMENT

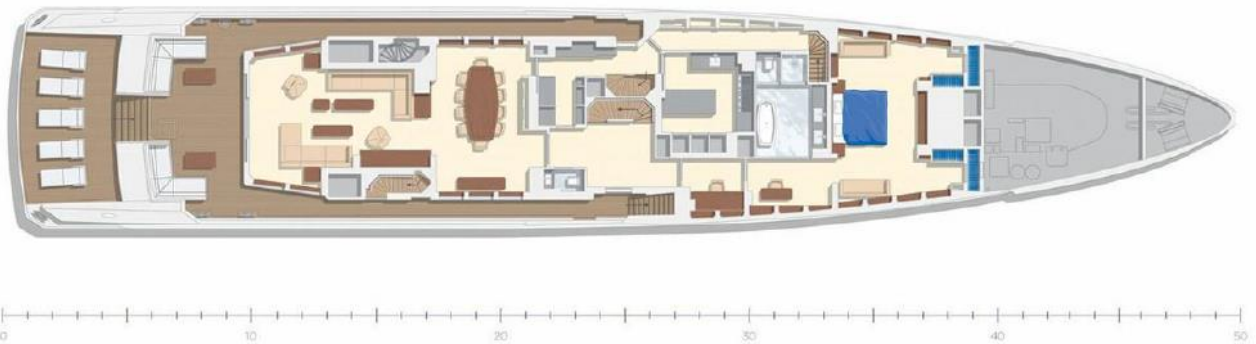
SUN DECK



UPPER DECK



MAIN DECK



LOWER DECK





SUMMARY

The 49.80 m superyacht HOME was built in full aluminium to ABS classification and delivered by Dutch shipyard Heesen in 2017. She is the first yacht to combine Van Oossanen's super-efficient FDHF hull design with hybrid propulsion, reducing fuel costs, emissions, noise and vibration. With a beam of 9.0 m and interior volume of 499GT.

HOME blends Northern European credentials with Italian style. Her exteriors are by Omega Architects and her minimalist Ibiza style interiors are by Cristiano Gatto, who has created spaces that blur the distinction between inside and out. Use of extensive floor to ceiling glass and interior teak decking in the sky lounge create a genuine beach club feel.

A large sun deck has sun loungers forward with privacy glass safety screens. Beneath the hardtop is a large sit-up bar to port and a lounge area to starboard, which could convert into a dining area. Aft is a Jacuzzi. The upper deck aft has open air dining shaded by the overhang and a sun lounge aft, and walk around side decks lead to the foredeck. The main deck aft has L-shaped banquettes port and starboard around coffee tables and a central staircase leads down to a huge swim platform that doubles as a sea level sun lounge. Behind a door, steps lead to an air conditioned gym and day head. Her sky lounge has bean bags, daybeds and a bar with light cascading through huge windows onto the teak decking. The main saloon has dark hardwood flooring with a relaxed lounge aft and a formal dining area forward, both with fabulous light and views, a media lounges without full height windows.

The full beam main deck owner's suite also features full height windows for incredible views and natural light at anchor. The suite has a dressing room, en suite with shower, and a private office. On the lower deck a full beam VIP stateroom, two double staterooms and two twin staterooms complete family friendly accommodation for 12 guests in six staterooms. She also sleep up to 10 crew.

KEY FEATURES

- Timeless design
- Dutch quality combined with Italian style
- Cutting-edge Oossanen exterior styling with eye-catching vertical bow
- Heesen's first Hybrid propulsion system yacht
- Reduced vibration, less noise, efficient fuel & energy consumption
- Northern-European pedigree
- Contemporary sophisticated Cristiano Gatto design
- 10.40 m Jupiter tow tender (12 person)
- 6.3m Castoldi Jet Tender 21 (12 person)
- 3.4m Zodiac rescue tender
- Engine hours is 4400h (January, 2023)

All speeds, measurements, capacities, consumptions, etc., may be approximate or estimated. Specifications provided for information only. Data was obtained from sources believed to be reliable and is not guaranteed by Owner or Brokers. Buyer assumes the responsibility to ascertain the correctness of all data contained herein and otherwise provided and must instruct his agent and surveyors to confirm all details for accuracy prior to purchase. Subject to prior sale, price and inventory change, or withdrawal from market without notice.