



Price	€ 5,50 M
Name	-
Builder	Custom
Origin	Turkey
Year/Refit	Under Construction
Overall Length	62.00 m / 203' 05"
Length at Waterline	54.77 m / 179' 08"
Beam	10.90 m / 35' 10"
Draught (Max.)	3.40 m / 11' 02"
Gross Tonnage	1150 grt
Displacement	885.00 tonnes
Engines	2 x 2012 hp CAT 3512C
Speed (Max / Cruise)	17 knots / 12 knots
Range	6500 nm
Fuel Capacity	126160 lts
Accommodation	12 guests in 6 staterooms, 14 crew in cabins
Type	Motor Yacht
Class	ABS
Flag	Cayman Islands
Hull Type	Mono hull
Hull Material	Steel
Superstructure Material	Aluminium
Hull Configuration	Fast Displacement
Number of Decks	4
Naval Architecture	Van Oossanen
Exterior Design	Hot Lab
Interior Design	TBD











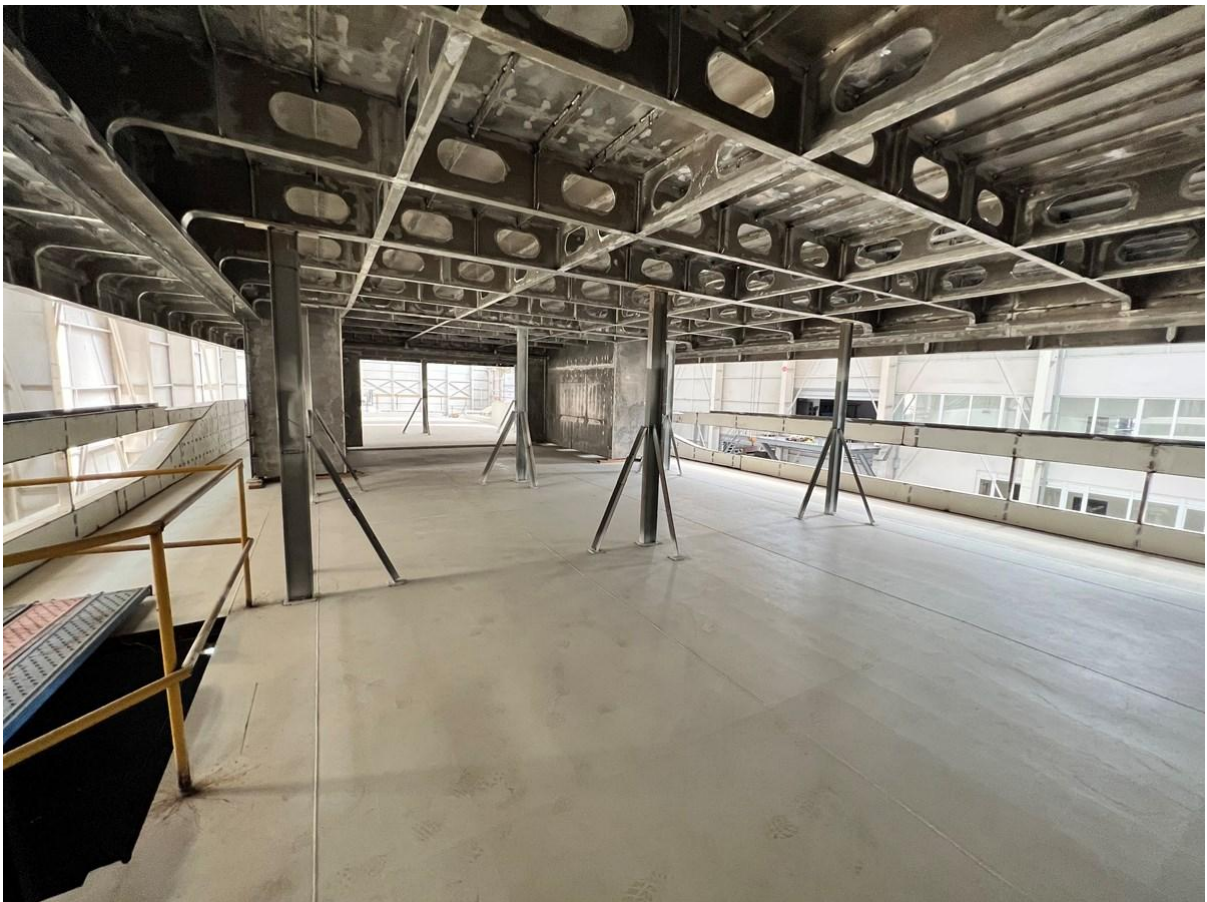
















GENERAL ARRANGEMENT





SUMMARY

The Custom 62.00 m new build can be completed in 24-26 months and features a fast displacement steel hull designed by Van Oossanen Naval Architects out of Holland with exterior styling by Milan based Hot Lab design studio.

Regarding the Fast Displacement Hull by Van Oossanen, this is a revolutionary design that has been featured on notable yachts like Heesen Galactica Star. The design allows for slender, sharp waterlines but it also allows for the same interior as a traditional hull form yet with increased performance & fuel efficiency.

She is ideal for families looking for a luxury vacation. Her extensive exterior areas and extended swim platform offer unparalleled means of enjoying her cruising grounds. Beach Club with self-bar, day head, service areas and lounge sofas provides the perfect environment for the guests. The side folding hatches enlarge the area at maximum space and guests can have the water-edge feeling for a swim and a cocktail.

She is a large volume with a gross tonnage of 1,150 GRT with one of the most impressive design elements being the elongated exterior deck spaces and her ground breaking hull design. The streamline design gives her an aggressive fluid feel and with an impressive range of 6,500 nm she not only looks gorgeous but is a true global cruiser.

KEY FEATURES

- Awarded innovations
- Full-beam Owners' Suite
- Massive volume
- Extended swimming platform
- 2 pool with sunbeds on the sundeck and upper deck
- Pop-up elevator serving from Accommodation Deck to Sundeck
- Various options related to owner's wishes
- High Dutch and Italian quality works with Van Oossanen and Hot Lab
- Test Calculations & Constructions approved by ABS

All speeds, measurements, capacities, consumptions, etc., may be approximate or estimated. Specifications provided for information only. Data was obtained from sources believed to be reliable and is not guaranteed by Owner or Brokers. Buyer assumes the responsibility to ascertain the correctness of all data contained herein and otherwise provided and must instruct his agent and surveyors to confirm all details for accuracy prior to purchase. Subject to prior sale, price and inventory change, or withdrawal from market without notice.