

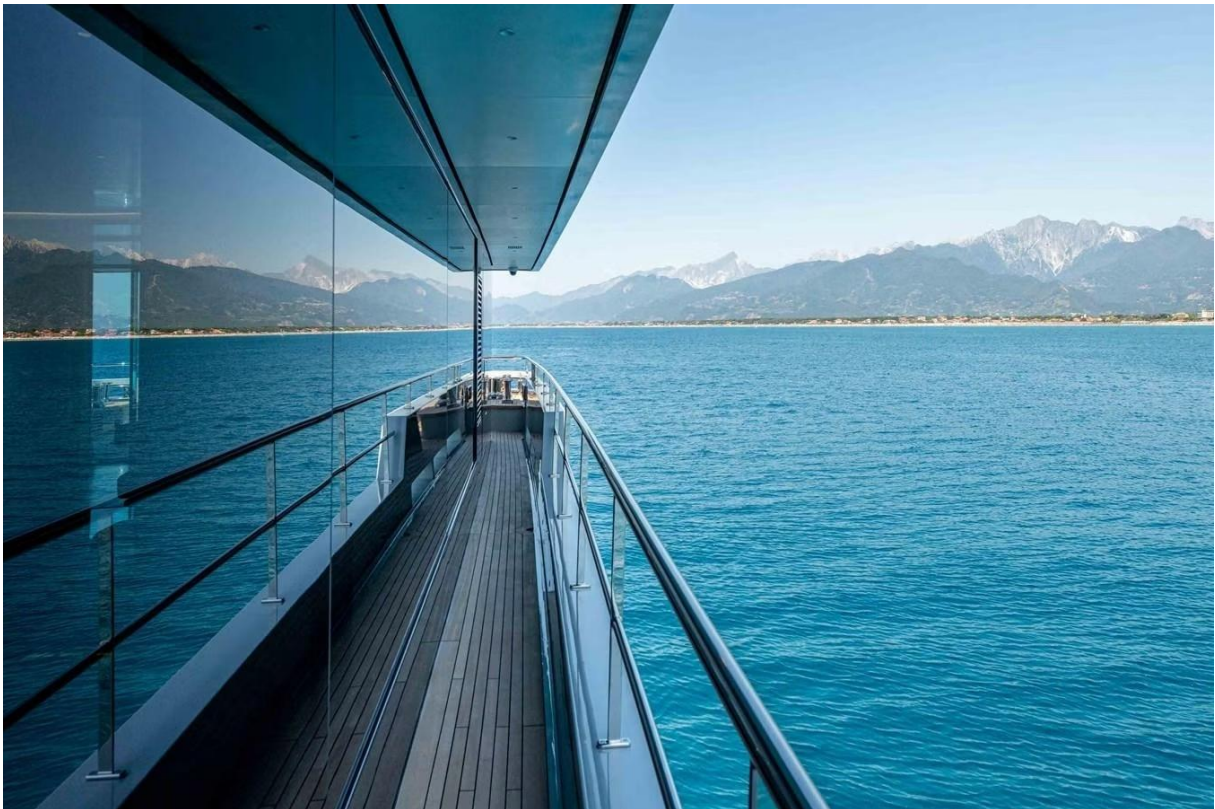


<b>Price</b>	€15 M
<b>Name</b>	Miss Candy
<b>Builder</b>	Versilcraft
<b>Origin</b>	Italy
<b>Year/Refit</b>	2022
<b>Overall Length</b>	45.00 m / 147' 00"
<b>Length at Waterline</b>	-
<b>Beam</b>	9.20 m / 30' 02"
<b>Draught (Max.)</b>	2.45 m / 08' 00"
<b>Gross Tonnage</b>	499 grt
<b>Displacement</b>	392 tonnes
<b>Engines</b>	2 x 1600 hp CAT ACERT E
<b>Speed (Max / Cruise)</b>	16 knots / 14 knots
<b>Range</b>	4000 nm
<b>Fuel Capacity</b>	-
<b>Accommodation</b>	10 guests in 5 staterooms, 11 crew in 4 cabins
<b>Type</b>	Motor Yacht
<b>Class</b>	RINA
<b>Flag</b>	Cayman Islands
<b>Hull Type</b>	Mono hull
<b>Hull Material</b>	Steel
<b>Superstructure Material</b>	Aluminium
<b>Hull Configuration</b>	Displacement
<b>Number of Decks</b>	3
<b>Naval Architecture</b>	Siman
<b>Exterior Design</b>	Versilcraft
<b>Interior Design</b>	Optima Design

















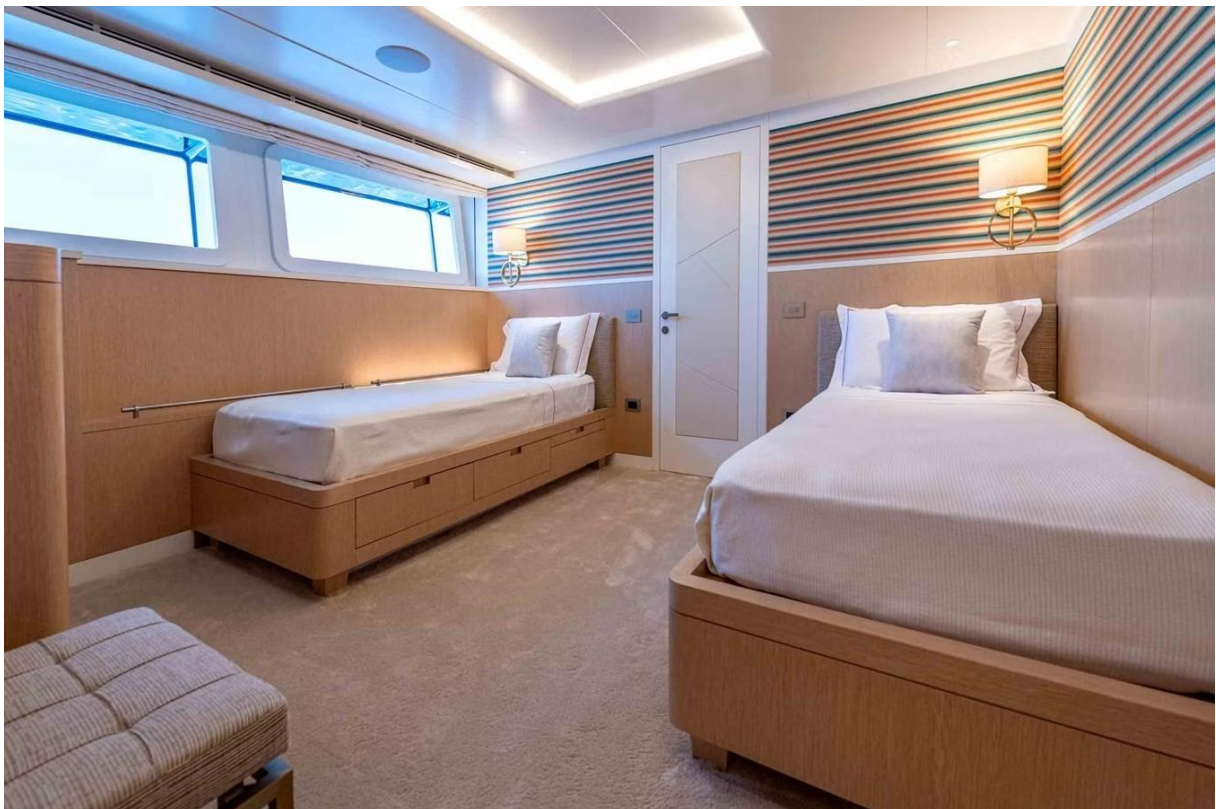


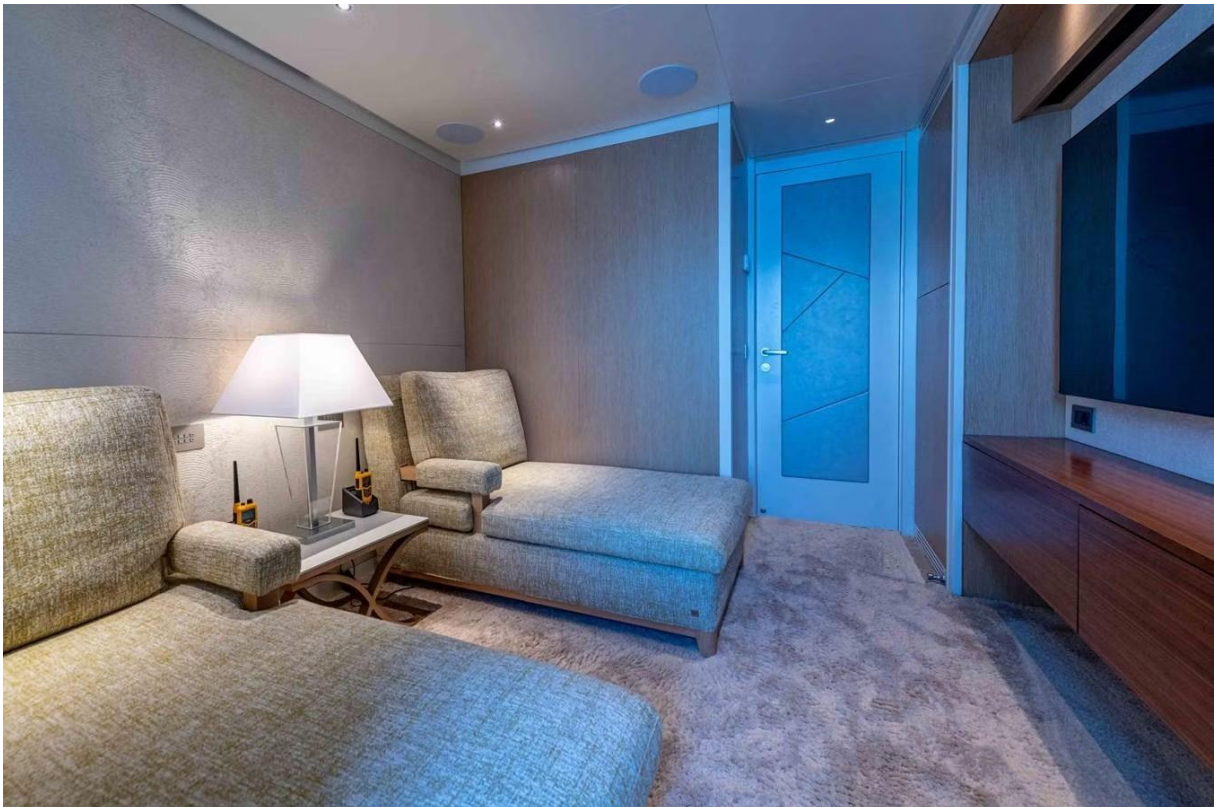


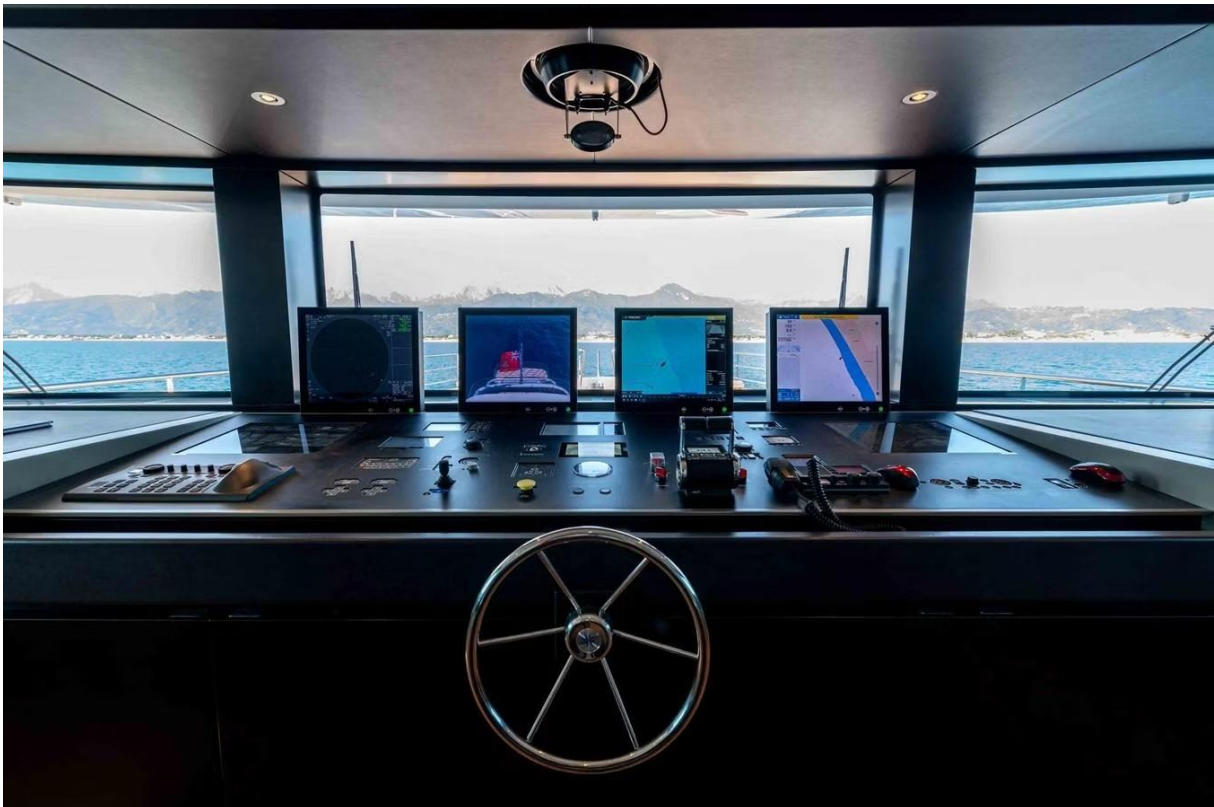










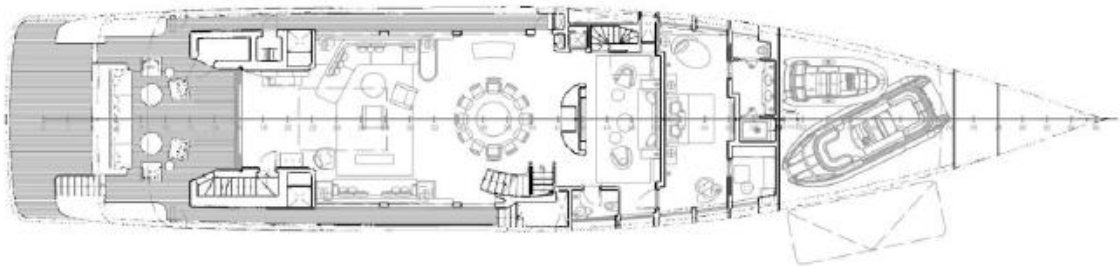
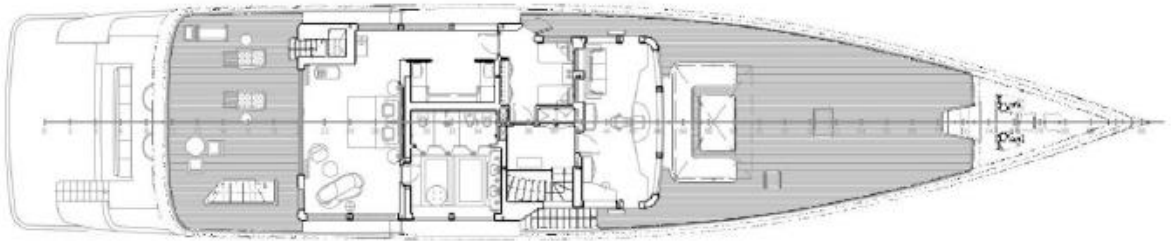
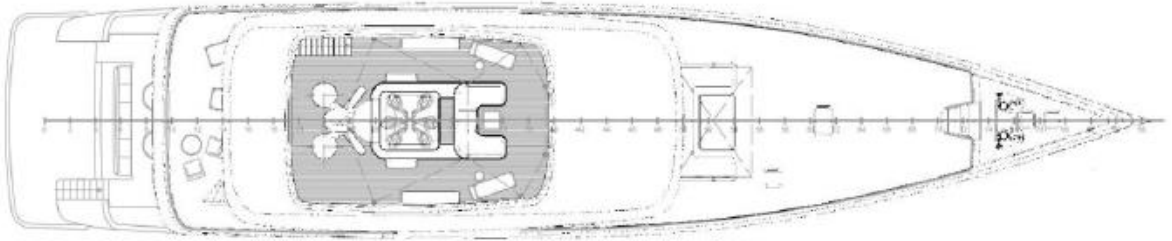
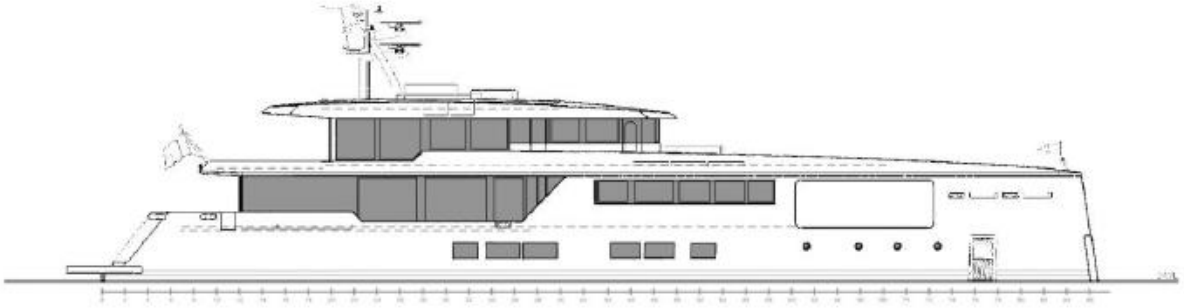








## GENERAL ARRANGEMENT



**SUMMARY**

The MISS CANDY, delivered in 2022 by Versilcraft, reflects the innovative design of their in-house team. This elegant yacht boasts a sun deck with a Jacuzzi, a master suite with a private terrace, and a saloon with floor-to-ceiling windows. Built with a steel hull and aluminum superstructure, she spans three decks, offering an internal volume of 499 GT. The yacht was the first of its Custom design series, launched in May 2022 and delivered in August following successful sea trials.

MISS CANDY's sleek exterior blends modern aesthetics with functionality, featuring a distinctive inverted bow for efficient navigation. Her generous dimensions provide ample interior and exterior spaces, including a thoughtfully arranged sun deck and a 32sq.m beach club with a steam room. These areas are tailored to enhance guest experiences, fostering social interaction and relaxation. Additionally, a bow tender garage accommodates water sports equipment, ensuring adventurous activities are easily accessible.

The interior exudes modern elegance with high-quality materials and clever lighting. The saloon's expansive windows flood the space with natural light, while a herringbone wood floor adds warmth. Accommodations for 10 guests include a luxurious owner's suite with a private study and terrace, a VIP on the main deck, and additional staterooms on the lower deck, all with ensuite facilities. The crew quarters, accommodating up to 11 members, are designed for comfort and efficiency.

Powered by twin Caterpillar engines, MISS CANDY reaches a top speed of 15 knots and cruises at 14 knots, with a range of 4,000 nautical miles. Equipped with stabilizers for comfort in rough waters, she also features amenities like air conditioning and a spacious sundeck. MISS CANDY offers a perfect blend of luxury, performance, and versatility.

**KEY FEATURES**

- In perfect condition
- Timeless design
- Ultra low engine hours
- Modern exterior design with sleek and striking lines
- Beach club fully equipped including steam room
- Elevated interior layout with a master stateroom on the upper deck and an extended main deck interior
- CMC electric stabilisers at anchor and underway

All speeds, measurements, capacities, consumptions, etc., may be approximate or estimated. Specifications provided for information only. Data was obtained from sources believed to be reliable and is not guaranteed by Owner or Brokers. Buyer assumes the responsibility to ascertain the correctness of all data contained herein and otherwise provided and must instruct his agent and surveyors to confirm all details for accuracy prior to purchase. Subject to prior sale, price and inventory change, or withdrawal from market without notice.