



Price	€4,80 M
Name	Nimir
Builder	Azimut
Origin	Italy
Year/Refit	2014
Overall Length	35.46 m / 116' 04"
Length at Waterline	-
Beam	7.40 m / 24' 03"
Draught (Max.)	2.05 m / 06' 09"
Gross Tonnage	240 grt
Displacement	148.00 tonnes
Engines	2 x 2400 hp MTU 16V2000M93
Speed (Max / Cruise)	26.5 knots / 16 knots
Range	-
Fuel Capacity	18000 lt
Accommodation	10 guests in 5 staterooms, 5 crew in 3 cabins
Type	Motor Yacht
Class	-
Flag	Turkish
Hull Type	Mono hull
Hull Material	GRP
Superstructure Material	GRP
Hull Configuration	Planning
Number of Decks	2
Naval Architecture	Azimut
Exterior Design	Stefano Righini
Interior Design	Carlo Galeazzi





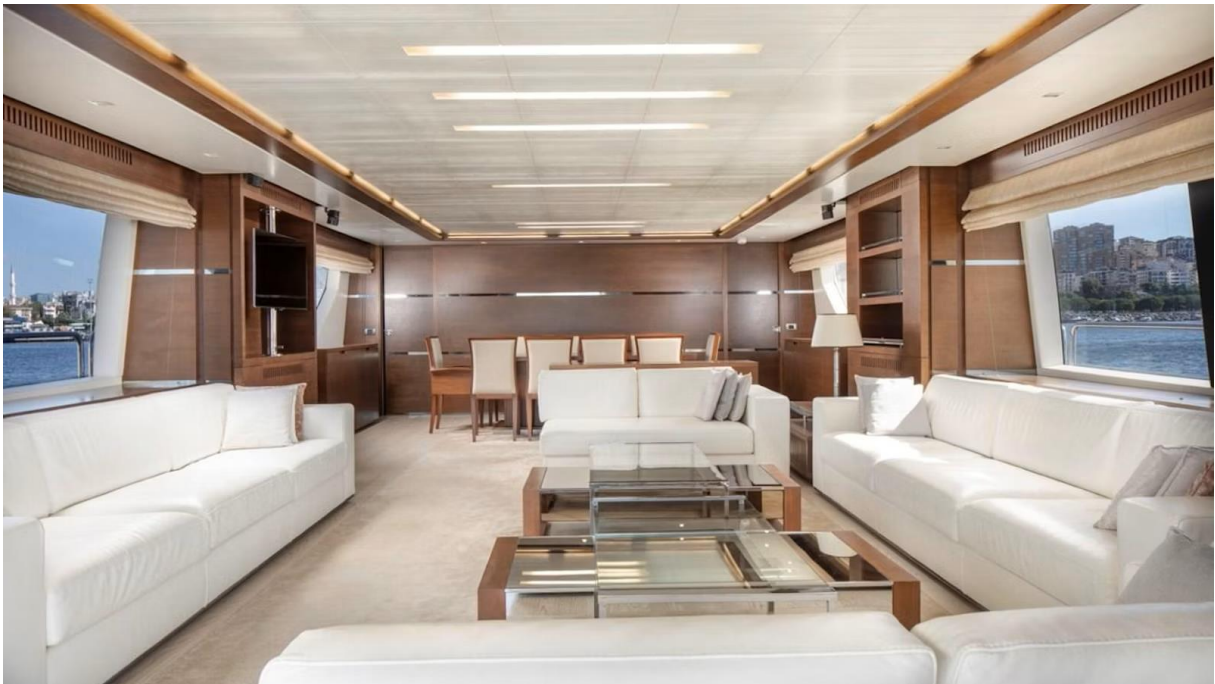








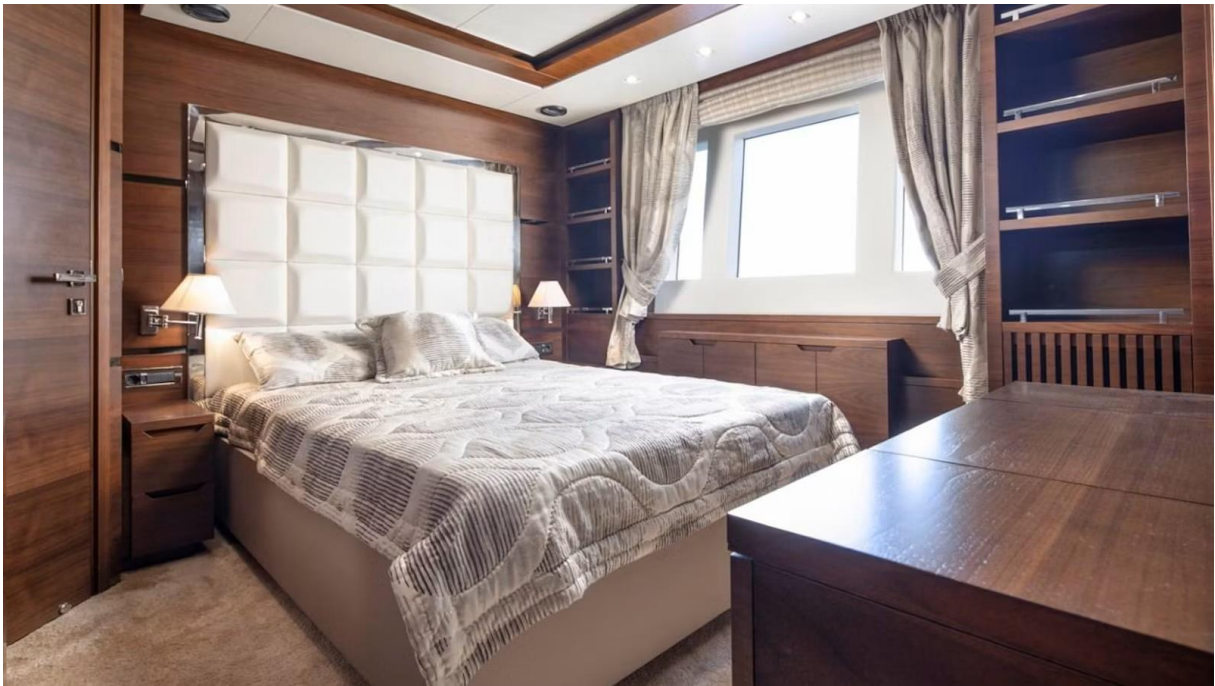




















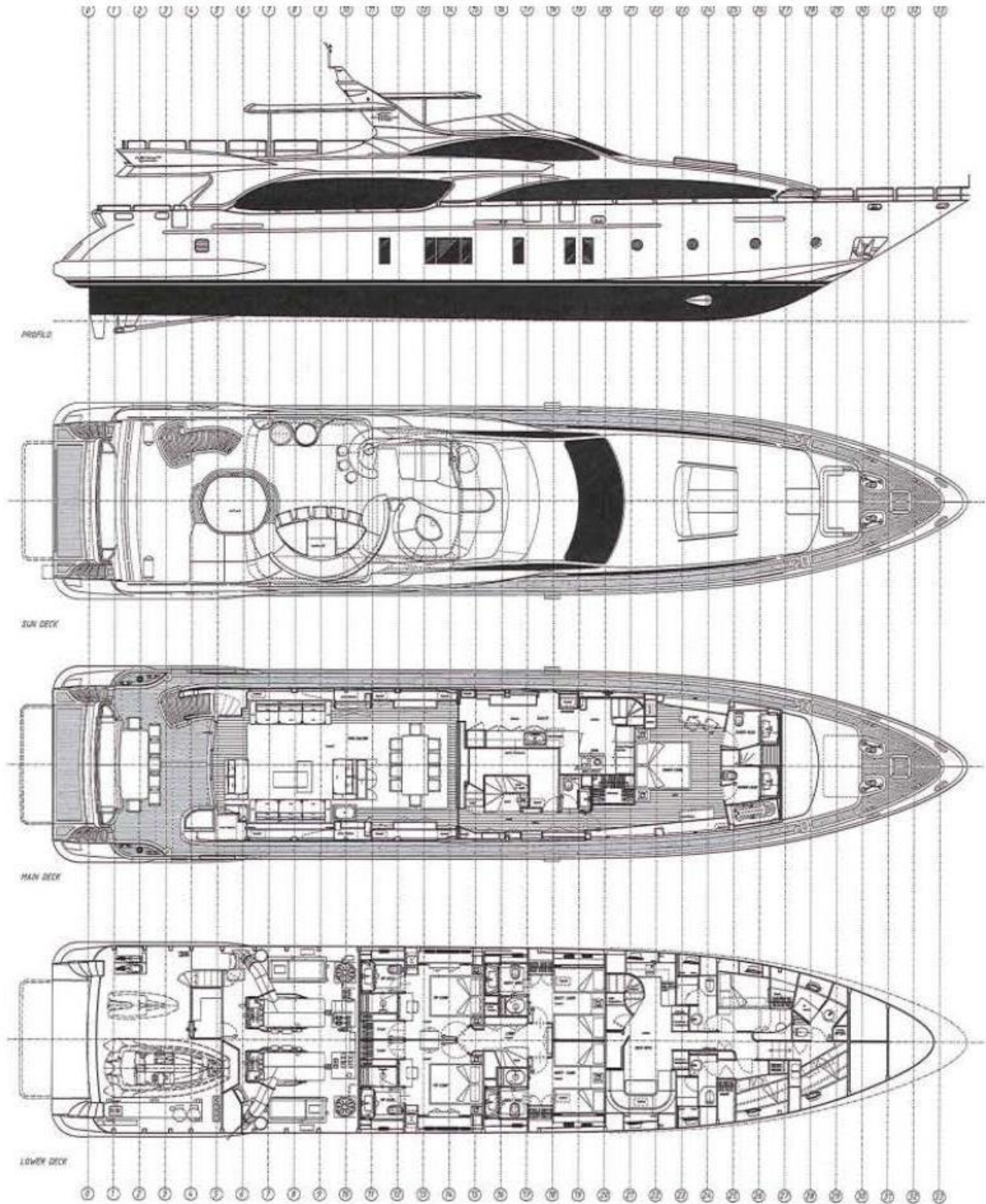




GENERAL ARRANGEMENT

AZIMUT
Grande

—116—



**SUMMARY**

The 35.46 m luxury motor yacht NIMIR, delivered by the esteemed Italian shipyard Azimut in 2014, epitomizes elegance and high-performance yachting. Designed by the renowned Stefano Righini, with lavish interiors crafted by Carlo Galeazzi, this masterpiece seamlessly blends sleek aesthetics with superior comfort. Built on a planing GRP hull, NIMIR boasts a commanding profile, a striking white superstructure, and teak-clad decks that exude timeless sophistication. Every inch of this yacht is tailored for an elite experience, offering a flawless balance of power and grace on the open seas.

Exuding refined opulence, NIMIR's interiors are a sanctuary of light wood finishes and expansive living areas, designed to accommodate up to 10 guests in five exquisitely appointed staterooms. The full-beam Master Suite, situated on the main deck, serves as an indulgent retreat with his-and-hers bathrooms, while two lavish VIP staterooms and two twin cabins ensure an uncompromised level of comfort. The main salon is a masterpiece of contemporary luxury, featuring an elegant lounge and dining area designed for seamless entertainment. Every detail, from the plush furnishings to the cutting-edge entertainment systems, reflects an unwavering commitment to excellence.

For those who seek unparalleled leisure, NIMIR's expansive sundeck is a haven of indulgence, complete with a Jacuzzi, bar, and sprawling sun pads, perfect for basking in the sun or enjoying sunset cocktails. A spacious garage houses a tender and jet ski, ensuring effortless access to the water. Powered by twin MTU 16V 2000 M93 engines, this magnificent yacht reaches a thrilling 26-knot top speed, delivering exhilarating performance while maintaining the highest standards of luxury. Whether for serene coastal cruising or high-speed adventures, NIMIR promises an unrivaled yachting experience tailored for the most discerning clientele.

KEY FEATURES

- Timeless Italian craftsmanship
- Impeccably maintained by her original Owner
- Full-beam Master Suite with his-and-hers bathrooms
- Expansive sundeck with Jacuzzi, bar, and sun pads
- Sleek, light-wood interior with plush furnishings
- Large garage for tender and toy storage
- Engine hours 1413h (Jan, 2025)
- TRAC zero speed stabilisers
- 4.20 m Avon Jet 420 tender

All speeds, measurements, capacities, consumptions, etc., may be approximate or estimated. Specifications provided for information only. Data was obtained from sources believed to be reliable and is not guaranteed by Owner or Brokers. Buyer assumes the responsibility to ascertain the correctness of all data contained herein and otherwise provided and must instruct his agent and surveyors to confirm all details for accuracy prior to purchase. Subject to prior sale, price and inventory change, or withdrawal from market without notice.